

OPEN HOUSE

SATURDAY 3 – 6 PM



2410 SKI TRAIL LANE #2506

\$1,279,000 2 BEDROOMS
#162024 2 BATHS
1,468 SQ FT PARKING GARAGE

Mt Werner to Apres Ski Way, L on Ski Trail Ln, Edgemont is on the L, #2506

CAM BOYD 970.846.8100



1295 OVERLOOK DRIVE

\$2,695,000 5 BEDROOMS
#171115 6 BATHS
6,227 SQ FT 2 CAR GARAGE

Steamboat Blvd to Clubhouse Dr, R on Overlook Dr, 1/4 mile, grey duplex on R

MARC SMALL 970.846.8815



1160 FAIRWAY WOODS

\$2,360,000 4 BEDROOMS
#170003 4.5 BATHS
7,801 SQ FT 3 CAR GARAGE

Mt Werner to Stmbt Blvd, R onto Fairway Woods, 2nd home on the L

PAM VANATTA 970.291.8100



687 MEADOWBROOK CIRCLE

\$1,895,000 4 BEDROOMS
#161553 4.5 BATHS
4,568 SQ FT 2+ CAR GARAGE

Steamboat Blvd to Meadowbrook Circle, Veer L, Home on the L

KATHY STEINBERG 970.846.8418

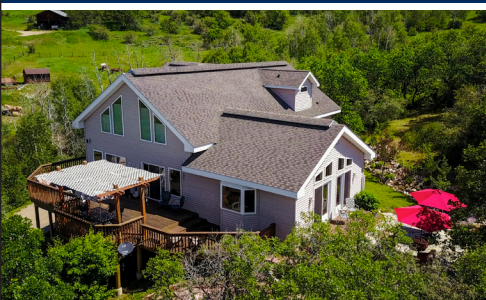


458 BLUE SAGE CIRCLE

\$895,000 5 BEDROOMS
#171077 3 BATHS
3,732 SQ FT 2+ CAR GARAGE

Fish Creek Falls Rd, L on Blue Sage Dr, L on 2nd Blue Sage Circle, on the L

DIANE CARTER 970.870.0594



32890 SOUTH ELK DRIVE

\$925,000 4 BEDROOMS
#170854 3 BATHS
3,989 SQ FT 2+ CAR GARAGE

Elk River Rd (129), R on Elk View Dr, R on South Elk Drive, 1st L into property

JACK CARTER 970.846.3261

Steamboat

Sotheby's
INTERNATIONAL REALTY