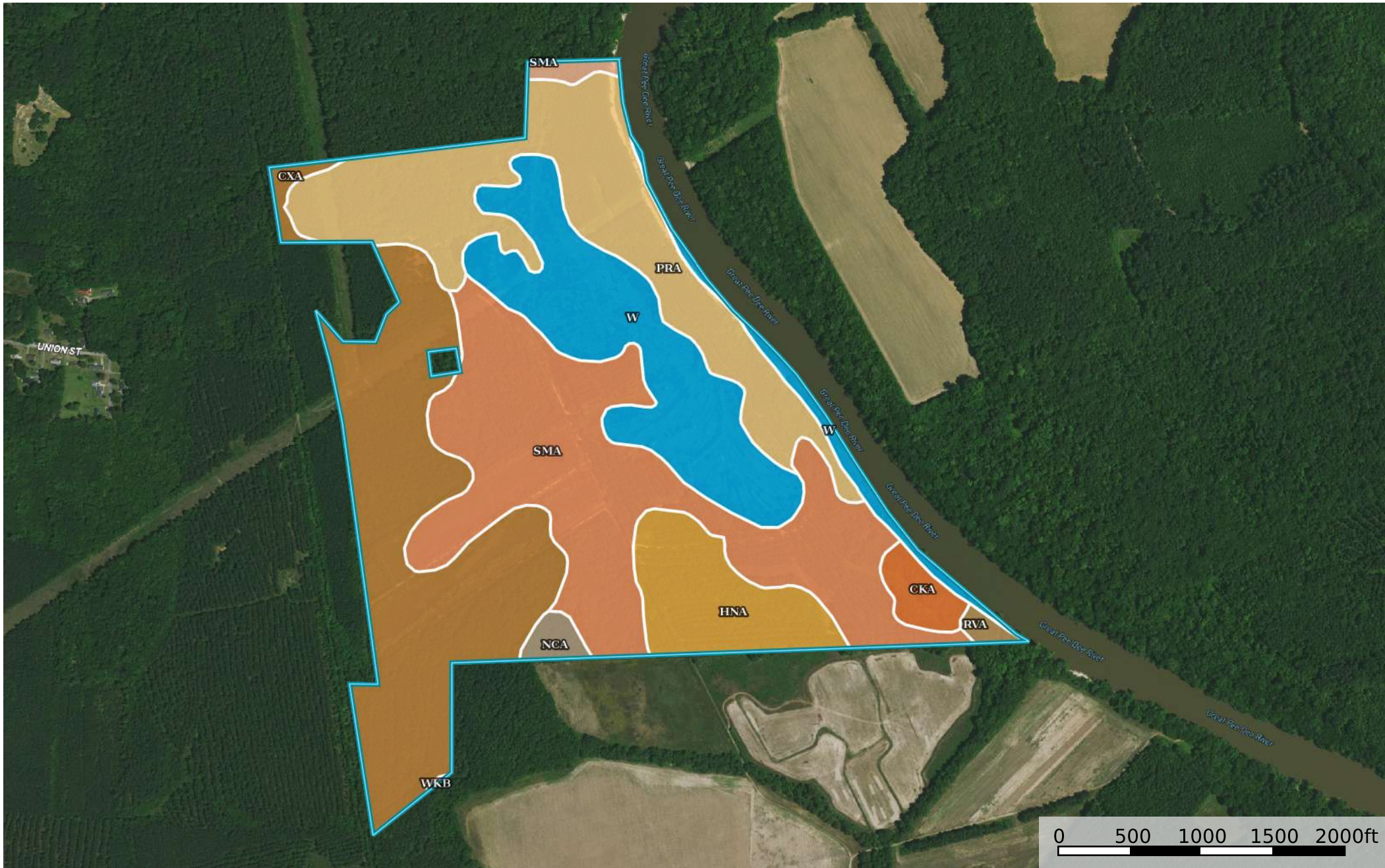


Pee Dee River Frontage Land, Society Hill, Darlington

Darlington County, South Carolina, 262 AC +/-



Boundary

|  Boundary 287.23 ac

SOIL CODE	SOIL DESCRIPTION	ACRES	%	CPI	NCCPI	CAP
SmA	Smithboro silt loam, 0 to 2 percent slopes	78.48	27.32	0	66	3w
CxA	Coxville sandy loam, 0 to 2 percent slopes	69.97	24.36	0	51	3w
PrA	Persanti loam, 0 to 2 percent slopes	57.1	19.88	0	67	2w
W	Water	49.65	17.29	0	-	-
HnA	Hornsville loam, 0 to 2 percent slopes	21.01	7.31	0	78	2w
CkA	Chewacla clay loam, 0 to 2 percent slopes, frequently flooded	5.05	1.76	0	55	4w
NcA	Noboco loamy sand, 0 to 2 percent slopes	2.6	0.91	0	62	1
CmA	Chewacla-Chastain complex, 0 to 2 percent slopes, frequently flooded	1.83	0.64	0	58	4w
RvA	Riverview silt loam, 0 to 2 percent slopes, frequently flooded	1.43	0.5	0	76	4w
WkB	Wickham sandy loam, 2 to 6 percent slopes, rarely flooded	0.11	0.04	0	79	2e
TOTALS		287.2 3(*)	100%	-	51.79	2.68









(*) Total acres may differ in the second decimal compared to the sum of each acreage soil. This is due to a round error because we only show the acres of each soil with two decimal.

Capability Legend

Increased Limitations and Hazards

Decreased Adaptability and Freedom of Choice Users

Land, Capability

								
	1	2	3	4	5	6	7	8
'Wild Life'	•	•	•	•	•	•	•	•
Forestry	•	•	•	•	•	•	•	
Limited	•	•	•	•	•	•	•	
Moderate	•	•	•	•	•	•		
Intense	•	•	•	•	•			
Limited	•	•	•	•				
Moderate	•	•	•					
Intense	•	•						
Very Intense	•							

Grazing Cultivation

(c) climatic limitations (e) susceptibility to erosion

(s) soil limitations within the rooting zone (w) excess of water