



1st. Floor

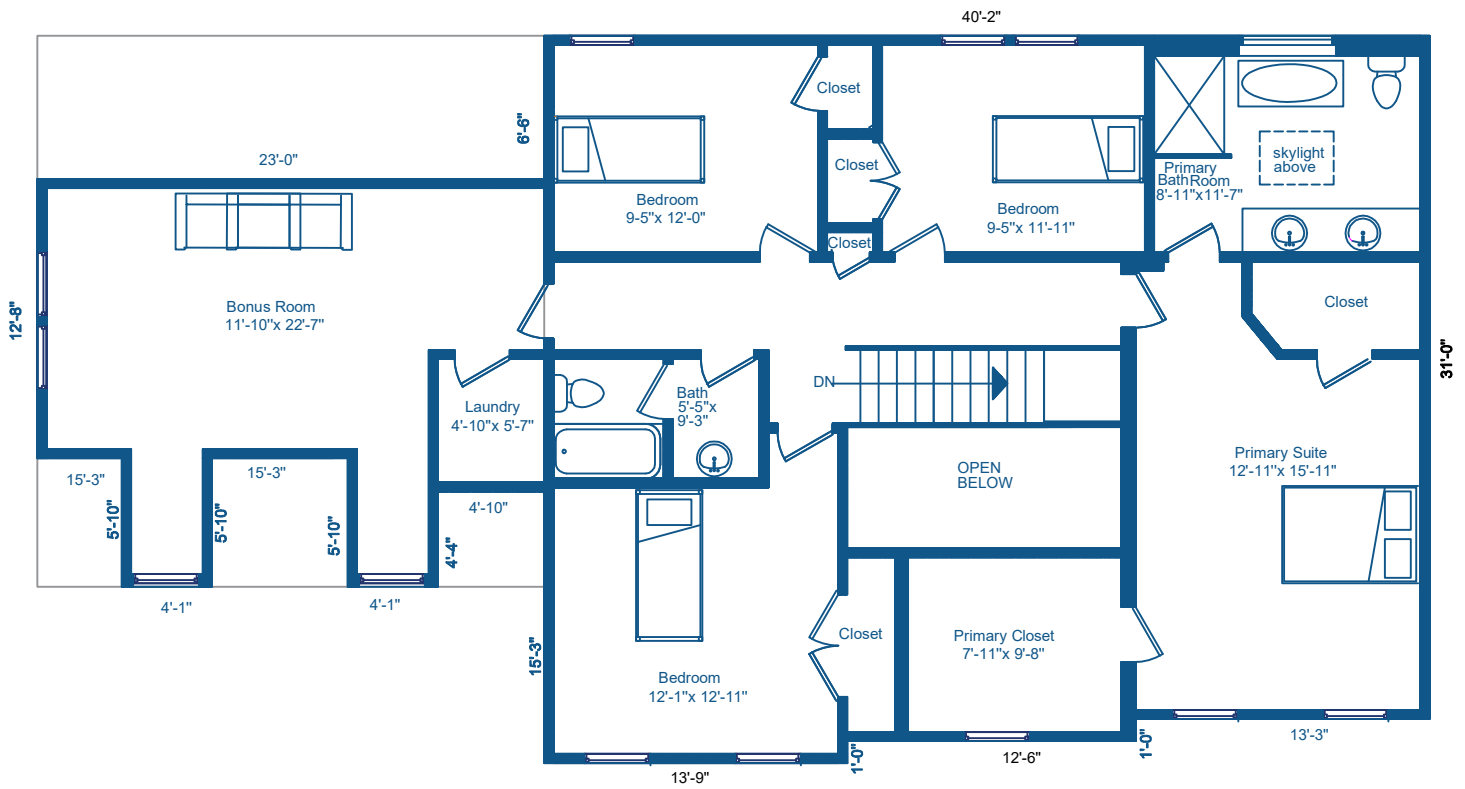
HEATED LIVING SPACE	
Heated Finished-	4361.5 sq.ft.
Garage	1341.3 sq.ft.
Basement	1341.3 sq.ft.
1 ST Floor	1388.3 sq.ft.
2 ND Floor	1631.9 sq.ft.
TOTAL HEATED	4361.5 sq.ft.

902 Hoke Trl, Cramerton, NC 28032



Home Measuring Service

7 0 4 - 4 9 3 - 5 7 8 8

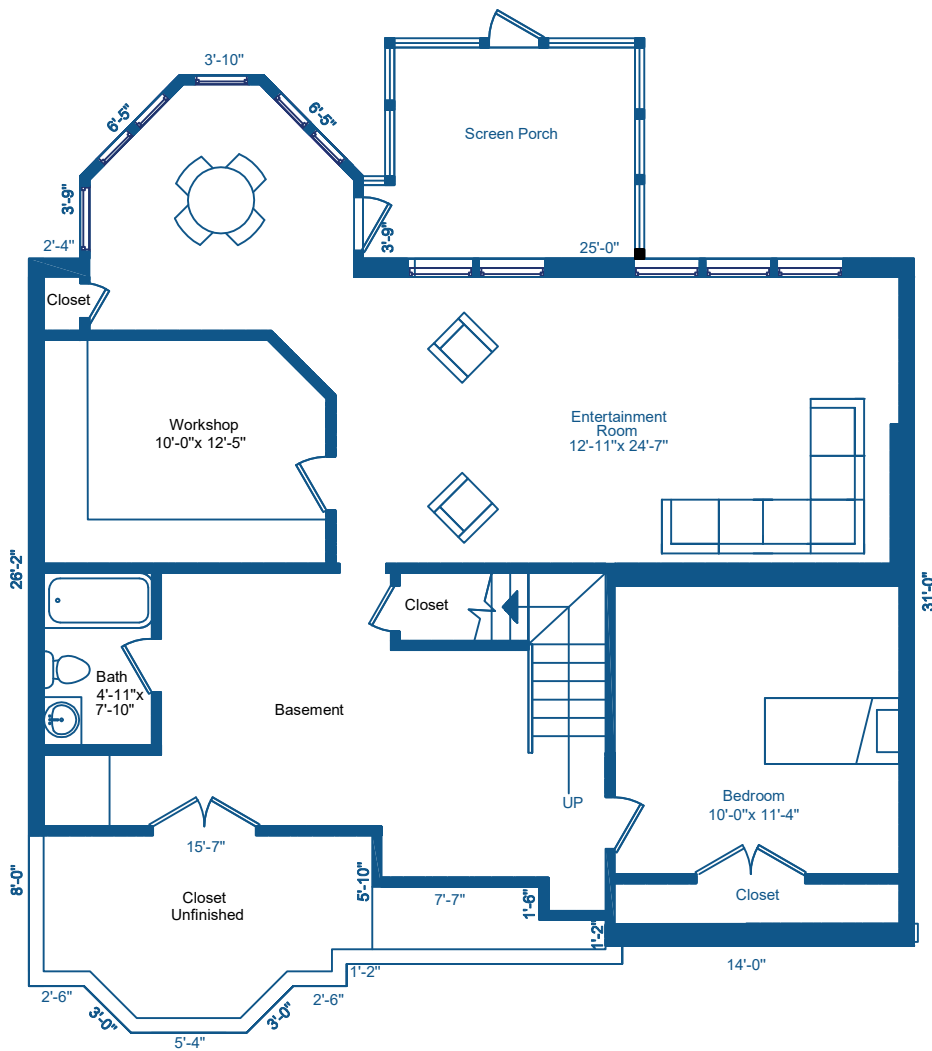


2nd Floor

HEATED LIVING SPACE	
Heated Finished-	4361.5 sq.ft.
Garage	1341.3 sq.ft.
Basement	1341.3 sq.ft.
1 ST Floor	1388.3 sq.ft.
2 ND Floor	1631.9 sq.ft.
TOTAL HEATED	4361.5 sq.ft.

902 Hoke Trl, Cramerton, NC 28032





Basement

HEATED LIVING SPACE

Heated Finished-	4361.5 sq. ft.
Garage	513.8 sq. ft.
Basement	1341.3 sq. ft.
1 ST Floor	1388.3 sq. ft.
2 ND Floor	1631.9 sq. ft.
TOTAL HEATED	4361.5 sq. ft.

902 Hoke Trl, Cramerton, NC 28032

WALL
2
WALL

Home Measuring Service
704-493-6768