

# 223 Lanyard Lane-First Floor

Gross Living Area - 3944.68 Sq Ft

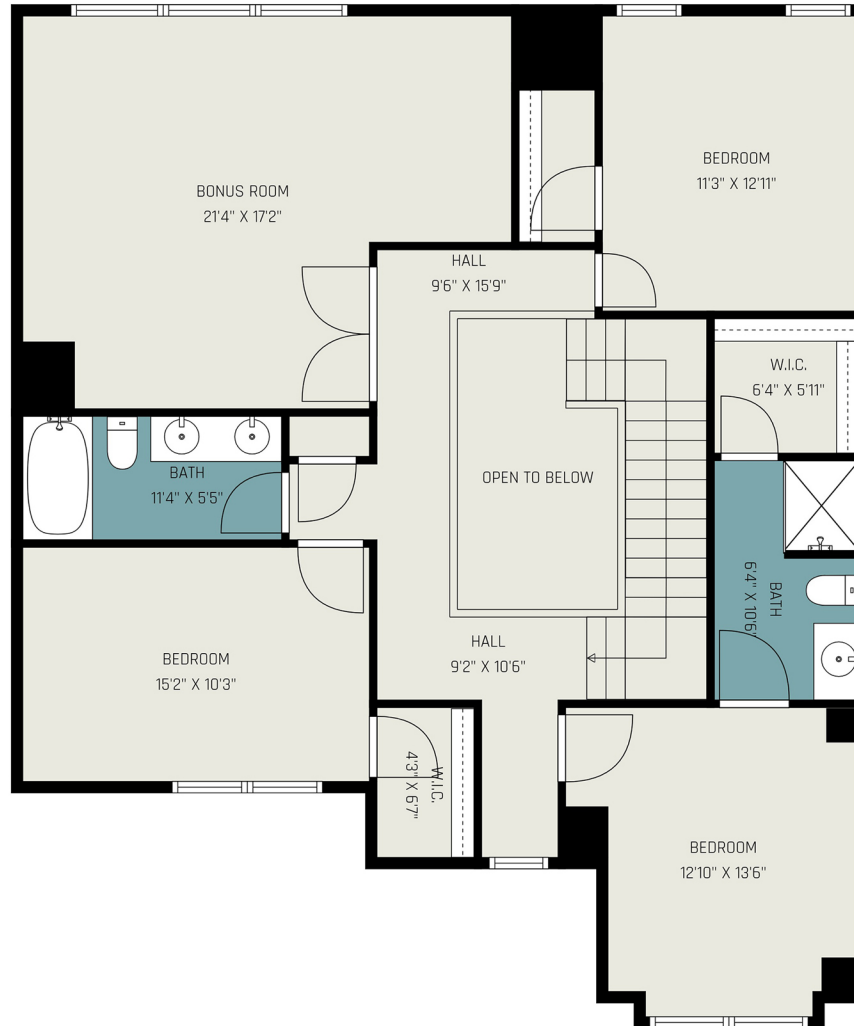
Non- Living Area - 1133.06 Sq Ft



# 223 Lanyard Lane-Second Floor

Gross Living Area - 3944.68 Sq Ft

Non- Living Area - 1133.06 Sq Ft

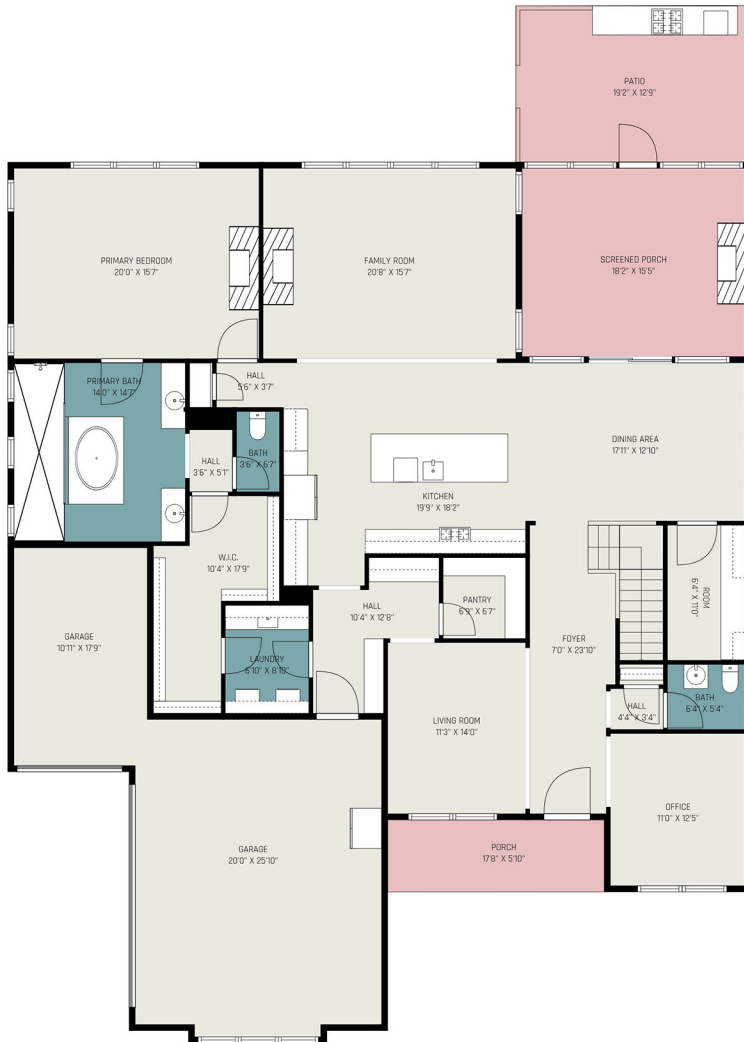


# 223 Lanyard Lane

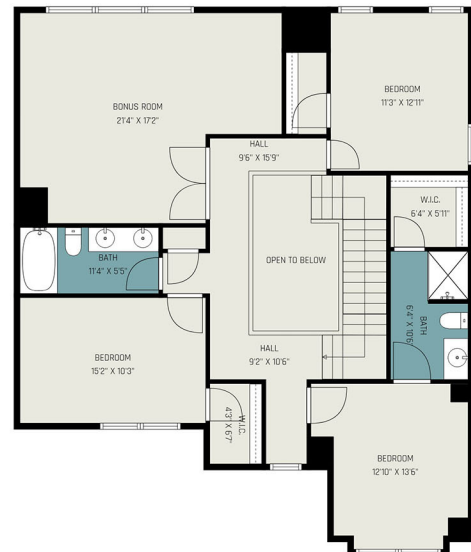
Gross Living Area - 3944.68 Sq Ft

Non- Living Area - 1133.06 Sq Ft

## First Floor



## Second Floor



### Area Calculation Summary

Gross Living Area	Calculation Details
First Floor	2557 Sq Ft
Open To Below	-71.60 Sq Ft
Second Floor	1459.28 Sq Ft
<b>Total Living Area</b>	<b>3944.68 Sq Ft</b>
Non-Living Area	
3 Car Attached	721.5 Sq Ft
Front Porch	106.75 Sq Ft
Screened Porch	304.81 Sq Ft
<b>Total Non- Living Area</b>	<b>1133.06 Sq Ft</b>