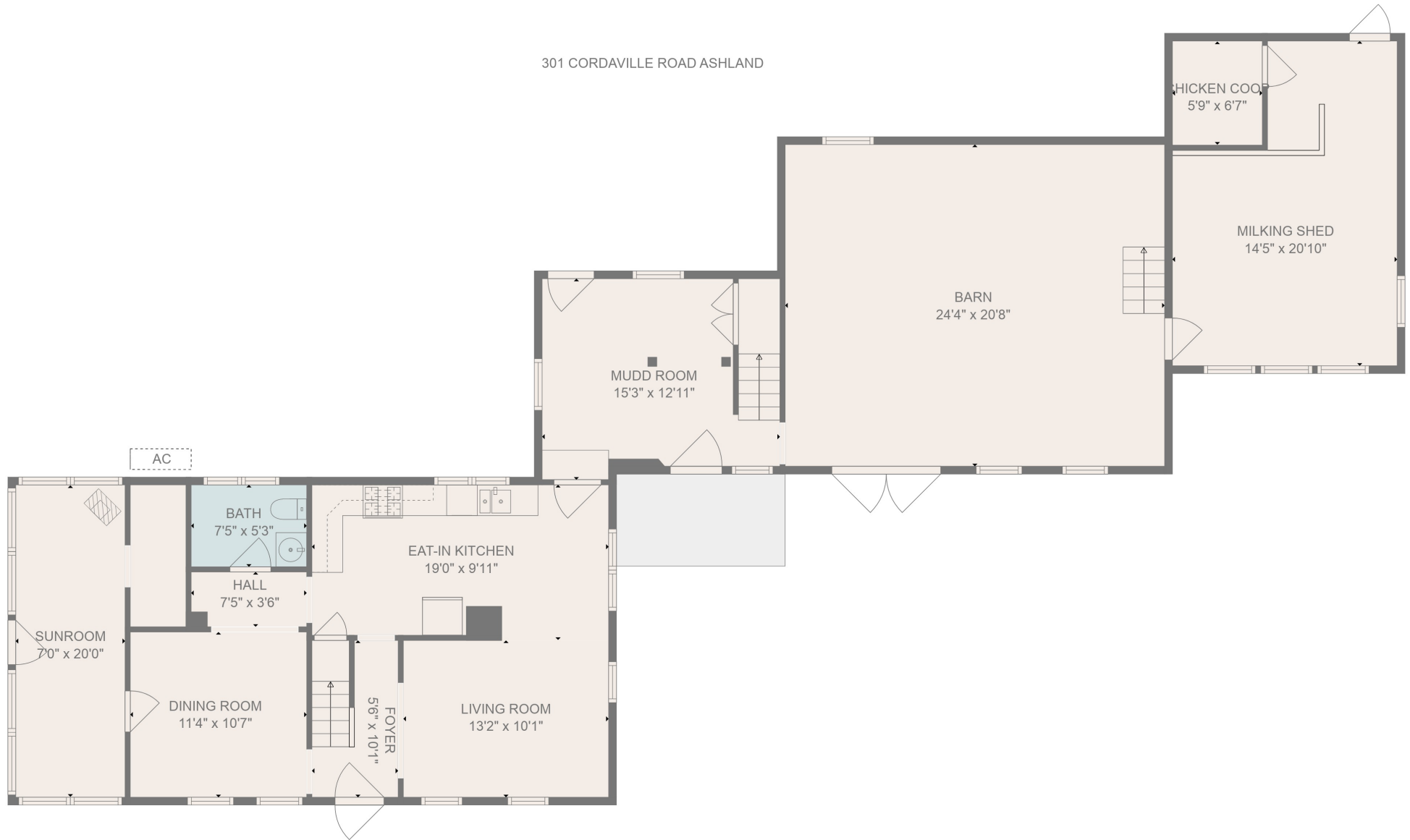


301 CORDAVILLE ROAD ASHLAND



TOTAL: 2219 sq. ft

FLOOR 1: 954 sq. ft, FLOOR 2: 1265 sq. ft

EXCLUDED AREAS: BARN: 509 sq. ft, MILKING SHED: 262 sq. ft, CHICKEN COOP: 38 sq. ft,
LOW CEILING: 134 sq. ft, STAIRWELL: 20 sq. ft, UNDEFINED: 63 sq. ft

MEASUREMENTS ARE CALCULATED BY CUBICASA TECHNOLOGY. DEEMED HIGHLY RELIABLE BUT NOT GUARANTEED.





TOTAL: 2219 sq. ft

FLOOR 1: 954 sq. ft, FLOOR 2: 1265 sq. ft

EXCLUDED AREAS: BARN: 509 sq. ft, MILKING SHED: 262 sq. ft, CHICKEN COOP: 38 sq. ft,
LOW CEILING: 134 sq. ft, STAIRWELL: 20 sq. ft, UNDEFINED: 63 sq. ft

MEASUREMENTS ARE CALCULATED BY CUBICASA TECHNOLOGY. DEEMED HIGHLY RELIABLE BUT NOT GUARANTEED.

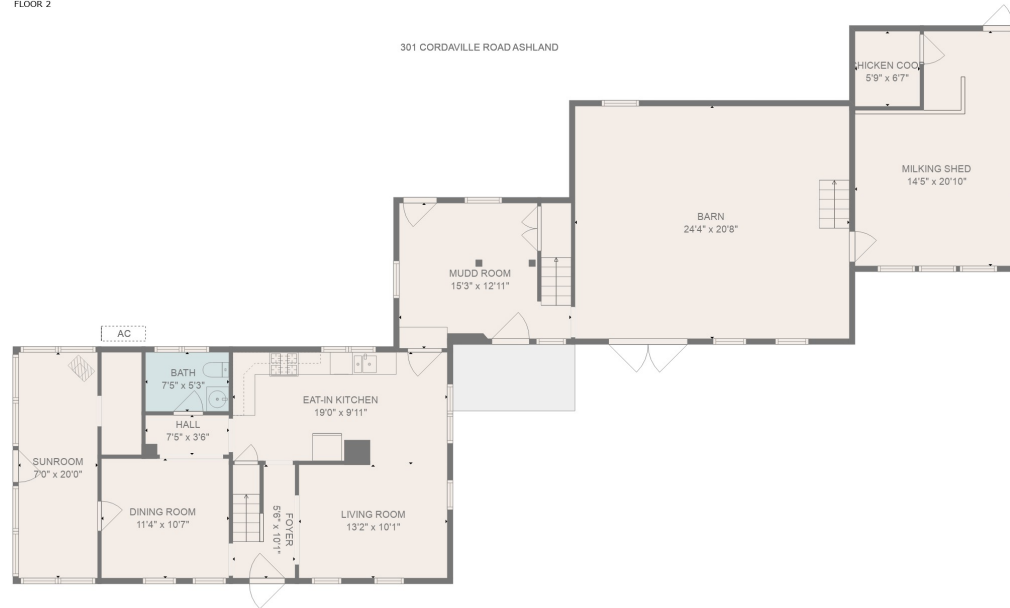


301 CORDAVILLE ROAD ASHLAND



FLOOR 2

301 CORDAVILLE ROAD ASHLAND



FLOOR 1

TOTAL: 2219 sq. ft

FLOOR 1: 954 sq. ft, FLOOR 2: 1265 sq. ft

EXCLUDED AREAS: BARN: 509 sq. ft, MILKING SHED: 262 sq. ft, CHICKEN COOP: 38 sq. ft,
LOW CEILING: 134 sq. ft, STAIRWELL: 20 sq. ft, UNDEFINED: 63 sq. ft

MEASUREMENTS ARE CALCULATED BY CUBICASA TECHNOLOGY. DEEMED HIGHLY RELIABLE BUT NOT GUARANTEED.

