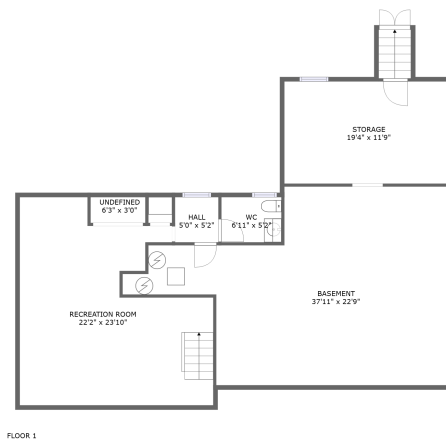
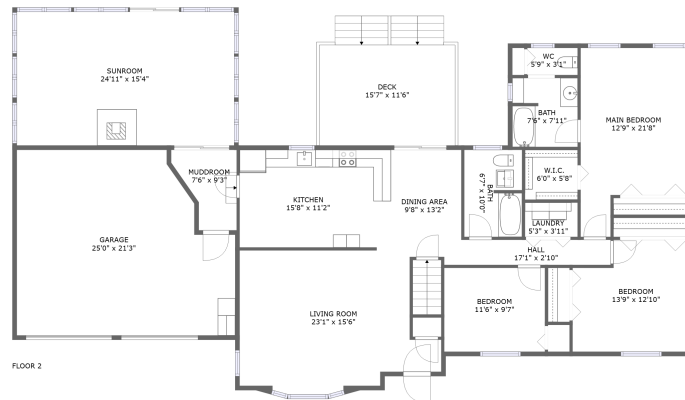



23 Larnis Road, Framingham, Middlesex County, Massachusetts, United States, 01701



Property summary


 **1** Garages

 **3** Bedrooms

 **2** Bathrooms

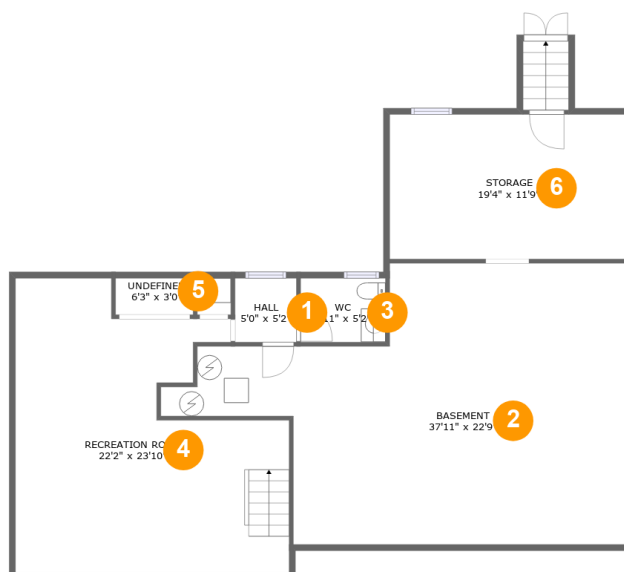
 **1** Half baths

 **2** Floors

 **3,307**
Gross living
area sqft

 **4,268**
Total sqft

**23 Larnis Road, Framingham, Middlesex County,
Massachusetts, United States, 01701**



Room dimensions

Floor 1

Total sqft: 1493 Living area: 1217

#		Dimensions	sqft	Counted as living area
1	Hall	5'0" x 5'2"	26 sq. ft	Yes
2	Basement	37'11" x 22'9"	616 sq. ft	Yes
3	WC	6'11" x 5'2"	36 sq. ft	Yes
4	Recreation Room	22'2" x 23'10"	414 sq. ft	Yes
5	Undefined	6'3" x 3'0"	19 sq. ft	Yes
6	Storage	19'4" x 11'9"	227 sq. ft	No

23 Larnis Road, Framingham, Middlesex County, Massachusetts, United States, 01701



Room dimensions

Floor 2

Total sqft: 2775 Living area: 2090

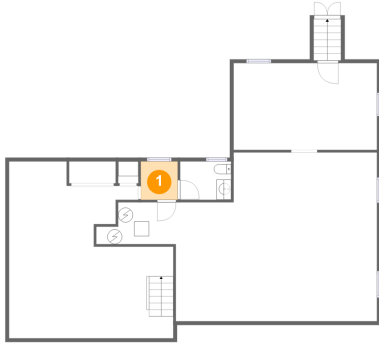
#		Dimensions	sqft	Counted as living area
7	Deck	15'7" x 11'6"	179 sq. ft	No
8	Muddroom	7'6" x 9'3"	52 sq. ft	Yes
9	Laundry	5'3" x 3'11"	24 sq. ft	Yes
10	Kitchen	15'8" x 11'2"	175 sq. ft	Yes
11	Living Room	23'1" x 15'6"	307 sq. ft	Yes
12	Bedroom	11'6" x 9'7"	111 sq. ft	Yes
13	W.I.C.	6'0" x 5'8"	34 sq. ft	Yes
14	WC	5'9" x 3'1"	18 sq. ft	Yes
15	Bath	6'7" x 10'0"	65 sq. ft	Yes
16	Main Bedroom	12'9" x 21'8"	232 sq. ft	Yes
17	Bedroom	13'9" x 12'10"	161 sq. ft	Yes

**23 Larnis Road, Framingham, Middlesex County,
Massachusetts, United States, 01701**

#		Dimensions	sqft	Counted as living area
18	Sunroom	24'11" x 15'4"	381 sq. ft	Yes
19	Bath	7'6" x 7'11"	58 sq. ft	Yes
20	Garage	25'0" x 21'3"	474 sq. ft	No
21	Hall	17'1" x 2'10"	49 sq. ft	Yes
22	Dining Area	9'8" x 13'2"	121 sq. ft	Yes

23 Larnis Road, Framingham, Middlesex County, Massachusetts, United States, 01701

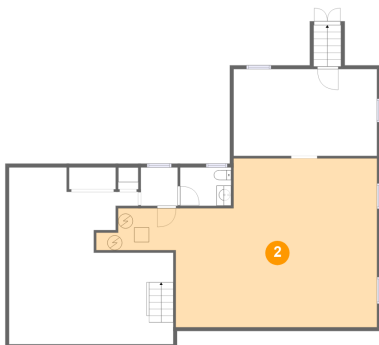
1 Floor 1 - Hall



Dimensions: 5'0" x 5'2"
Area: 26 sq. ft
Counted as living area: Yes

Heated: Yes
Finished: Yes
Enclosed: Yes
Contiguous: Yes
Permitted: Yes
Wet space: No
Addition: No
Conversion: No

2 Floor 1 - Basement

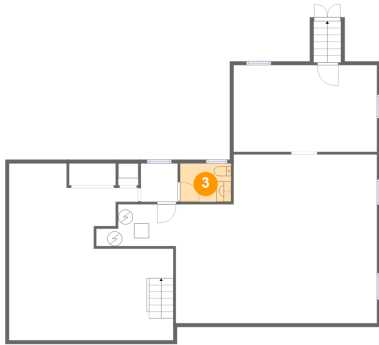


Dimensions: 37'11" x 22'9"
Area: 616 sq. ft
Counted as living area: Yes

Heated: Yes
Finished: Yes
Enclosed: Yes
Contiguous: Yes
Permitted: Yes
Wet space: No
Addition: No
Conversion: No

**23 Larnis Road, Framingham, Middlesex County,
Massachusetts, United States, 01701**

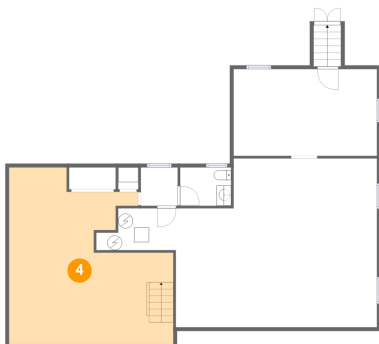
3 Floor 1 - WC



Dimensions: 6'11" x 5'2"
Area: 36 sq. ft
Counted as living area: Yes

Heated: Yes
Finished: Yes
Enclosed: Yes
Contiguous: Yes
Permitted: Yes
Wet space: Yes
Addition: No
Conversion: No

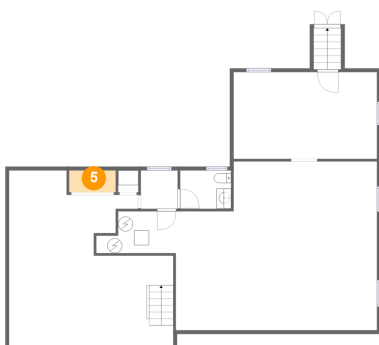
4 Floor 1 - Recreation Room



Dimensions: 22'2" x 23'10"
Area: 414 sq. ft
Counted as living area: Yes

Heated: Yes
Finished: Yes
Enclosed: Yes
Contiguous: Yes
Permitted: Yes
Wet space: No
Addition: No
Conversion: No

5 Floor 1 - Undefined

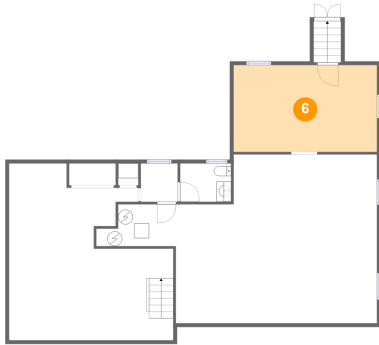


Dimensions: 6'3" x 3'0"
Area: 19 sq. ft
Counted as living area: Yes

Heated: Yes
Finished: Yes
Enclosed: Yes
Contiguous: Yes
Permitted: Yes
Wet space: No
Addition: No
Conversion: No

**23 Larnis Road, Framingham, Middlesex County,
Massachusetts, United States, 01701**

6 Floor 1 - Storage



Dimensions: 19'4" x 11'9"
Area: 227 sq. ft
Counted as living area: No

Heated: No
Finished: No
Enclosed: No
Contiguous: Yes
Permitted: Yes
Wet space: No
Addition: No
Conversion: No

7 Floor 2 - Deck



Dimensions: 15'7" x 11'6"
Area: 179 sq. ft
Counted as living area: No

Heated: No
Finished: Yes
Enclosed: No
Contiguous: Yes
Permitted: Yes
Wet space: No
Addition: No
Conversion: No

8 Floor 2 - Muddroom



Dimensions: 7'6" x 9'3"
Area: 52 sq. ft
Counted as living area: Yes

Heated: Yes
Finished: Yes
Enclosed: Yes
Contiguous: Yes
Permitted: Yes
Wet space: No
Addition: No
Conversion: No

**23 Larnis Road, Framingham, Middlesex County,
Massachusetts, United States, 01701**

9 Floor 2 - Laundry



Dimensions: 5'3" x 3'11"
Area: 24 sq. ft
Counted as living area: Yes

Heated: Yes
Finished: Yes
Enclosed: Yes
Contiguous: Yes
Permitted: Yes
Wet space: No
Addition: No
Conversion: No

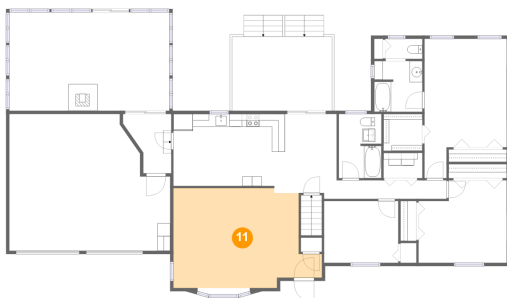
10 Floor 2 - Kitchen



Dimensions: 15'8" x 11'2"
Area: 175 sq. ft
Counted as living area: Yes

Heated: Yes
Finished: Yes
Enclosed: Yes
Contiguous: Yes
Permitted: Yes
Wet space: No
Addition: No
Conversion: No

11 Floor 2 - Living Room



Dimensions: 23'1" x 15'6"
Area: 307 sq. ft
Counted as living area: Yes

Heated: Yes
Finished: Yes
Enclosed: Yes
Contiguous: Yes
Permitted: Yes
Wet space: No
Addition: No
Conversion: No

**23 Larnis Road, Framingham, Middlesex County,
Massachusetts, United States, 01701**

12 Floor 2 - Bedroom



Dimensions: 11'6" x 9'7"
Area: 111 sq. ft
Counted as living area: Yes

Heated: Yes
Finished: Yes
Enclosed: Yes
Contiguous: Yes
Permitted: Yes
Wet space: No
Addition: No
Conversion: No

13 Floor 2 - W.I.C.



Dimensions: 6'0" x 5'8"
Area: 34 sq. ft
Counted as living area: Yes

Heated: Yes
Finished: Yes
Enclosed: Yes
Contiguous: Yes
Permitted: Yes
Wet space: No
Addition: No
Conversion: No

14 Floor 2 - WC



Dimensions: 5'9" x 3'1"
Area: 18 sq. ft
Counted as living area: Yes

Heated: Yes
Finished: Yes
Enclosed: Yes
Contiguous: Yes
Permitted: Yes
Wet space: Yes
Addition: No
Conversion: No

**23 Larnis Road, Framingham, Middlesex County,
Massachusetts, United States, 01701**

15 Floor 2 - Bath



Dimensions: 6'7" x 10'0"
Area: 65 sq. ft
Counted as living area: Yes

Heated: Yes
Finished: Yes
Enclosed: Yes
Contiguous: Yes
Permitted: Yes
Wet space: Yes
Addition: No
Conversion: No

16 Floor 2 - Main Bedroom



Dimensions: 12'9" x 21'8"
Area: 232 sq. ft
Counted as living area: Yes

Heated: Yes
Finished: Yes
Enclosed: Yes
Contiguous: Yes
Permitted: Yes
Wet space: No
Addition: No
Conversion: No

17 Floor 2 - Bedroom



Dimensions: 13'9" x 12'10"
Area: 161 sq. ft
Counted as living area: Yes

Heated: Yes
Finished: Yes
Enclosed: Yes
Contiguous: Yes
Permitted: Yes
Wet space: No
Addition: No
Conversion: No

**23 Larnis Road, Framingham, Middlesex County,
Massachusetts, United States, 01701**

18 Floor 2 - Sunroom



Dimensions: 24'11" x 15'4"
Area: 381 sq. ft
Counted as living area: Yes

Heated: Yes
Finished: Yes
Enclosed: Yes
Contiguous: Yes
Permitted: Yes
Wet space: No
Addition: No
Conversion: No

19 Floor 2 - Bath



Dimensions: 7'6" x 7'11"
Area: 58 sq. ft
Counted as living area: Yes

Heated: Yes
Finished: Yes
Enclosed: Yes
Contiguous: Yes
Permitted: Yes
Wet space: Yes
Addition: No
Conversion: No

20 Floor 2 - Garage



Dimensions: 25'0" x 21'3"
Area: 474 sq. ft
Counted as living area: No

Heated: No
Finished: No
Enclosed: Yes
Contiguous: Yes
Permitted: Yes
Wet space: No
Addition: No
Conversion: No

**23 Larnis Road, Framingham, Middlesex County,
Massachusetts, United States, 01701**

21 Floor 2 - Hall



Dimensions: 17'1" x 2'10"
Area: 49 sq. ft
Counted as living area: Yes

Heated: Yes
Finished: Yes
Enclosed: Yes
Contiguous: Yes
Permitted: Yes
Wet space: No
Addition: No
Conversion: No

22 Floor 2 - Dining Area



Dimensions: 9'8" x 13'2"
Area: 121 sq. ft
Counted as living area: Yes

Heated: Yes
Finished: Yes
Enclosed: Yes
Contiguous: Yes
Permitted: Yes
Wet space: No
Addition: No
Conversion: No