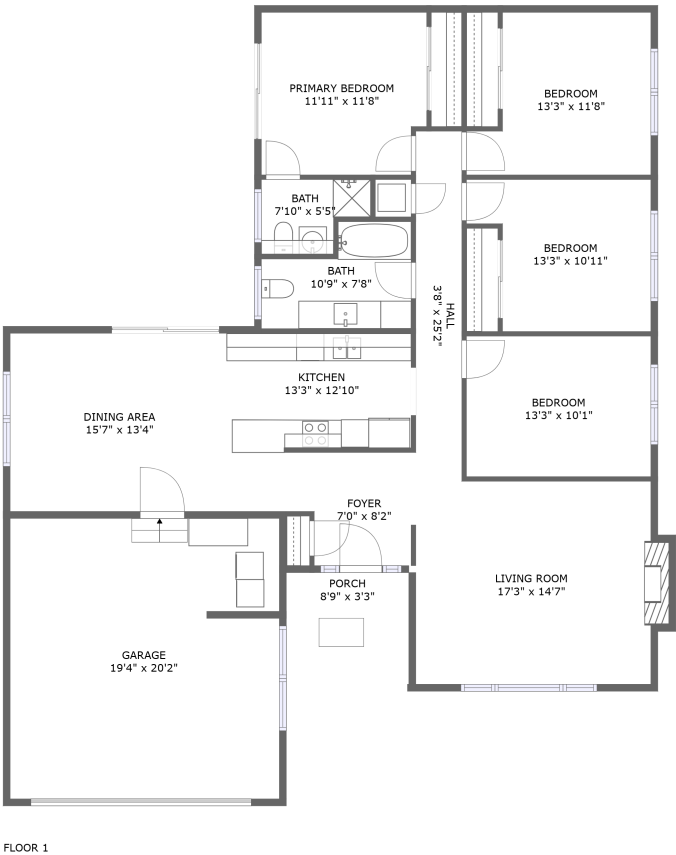


5718 Southgrove Drive, Citrus Heights, California
95610, United States



Property summary


 **1** Garages

 **4** Bedrooms

 **2** Bathrooms

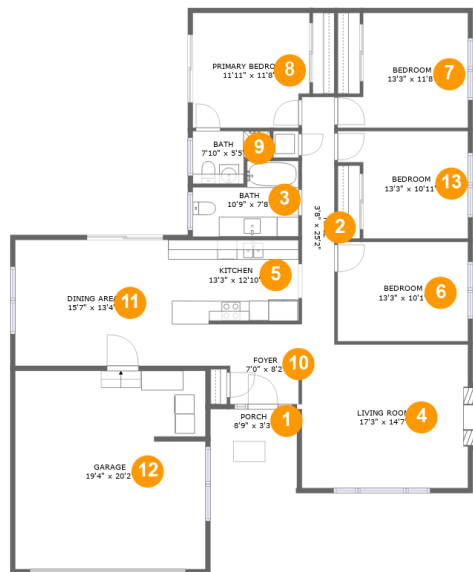
 **0** Half baths

 **1** Floors

 **1,576**
Gross living
area sqft

 **2,032**
Total sqft

**5718 Southgrove Drive, Citrus Heights, California
95610, United States**



Room dimensions

Floor 1

Total sqft: 2032 Living area: 1576

#		Dimensions	sqft	Counted as living area
1	Porch	8'9" x 3'3"	29 sq. ft	No
2	Hall	3'8" x 25'2"	84 sq. ft	Yes
3	Bath	10'9" x 7'8"	68 sq. ft	Yes
4	Living Room	17'3" x 14'7"	255 sq. ft	Yes
5	Kitchen	13'3" x 12'10"	137 sq. ft	Yes
6	Bedroom	13'3" x 10'1"	134 sq. ft	Yes
7	Bedroom	13'3" x 11'8"	133 sq. ft	Yes
8	Primary Bedroom	11'11" x 11'8"	135 sq. ft	Yes
9	Bath	7'10" x 5'5"	35 sq. ft	Yes
10	Foyer	7'0" x 8'2"	57 sq. ft	Yes
11	Dining Area	15'7" x 13'4"	203 sq. ft	Yes

Scan captured on Wed, 02 Apr 2025 20:31:41 GMT

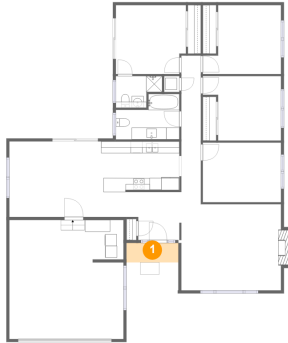
Information is calculated by Cubicasa technology deemed highly reliable but not guaranteed.

5718 Southgrove Drive, Citrus Heights, California
95610, United States

#		Dimensions	sqft	Counted as living area
12	Garage	19'4" x 20'2"	387 sq. ft	No
13	Bedroom	13'3" x 10'11"	125 sq. ft	Yes

**5718 Southgrove Drive, Citrus Heights, California
95610, United States**

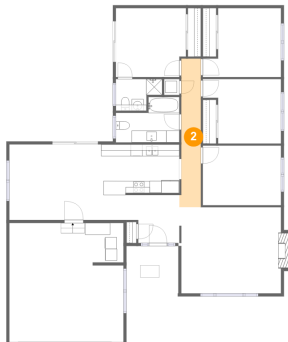
1 Floor 1 - Porch



Dimensions: 8'9" x 3'3"
Area: 29 sq. ft
Counted as living area: No

Heated: No
Finished: Yes
Enclosed: No
Contiguous: Yes
Permitted: Yes
Wet space: No
Addition: No
Conversion: No

2 Floor 1 - Hall

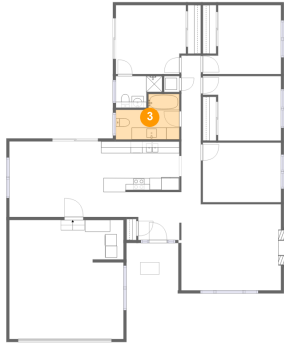


Dimensions: 3'8" x 25'2"
Area: 84 sq. ft
Counted as living area: Yes

Heated: Yes
Finished: Yes
Enclosed: Yes
Contiguous: Yes
Permitted: Yes
Wet space: No
Addition: No
Conversion: No

5718 Southgrove Drive, Citrus Heights, California
95610, United States

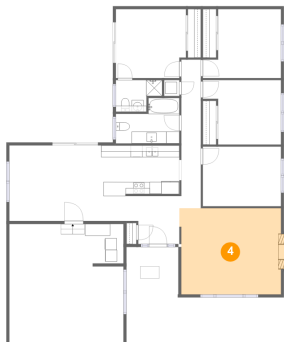
3 Floor 1 - Bath



Dimensions: 10'9" x 7'8"
Area: 68 sq. ft
Counted as living area: Yes

Heated: Yes
Finished: Yes
Enclosed: Yes
Contiguous: Yes
Permitted: Yes
Wet space: Yes
Addition: No
Conversion: No

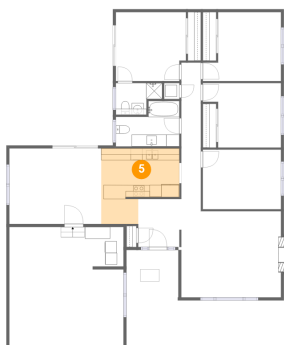
4 Floor 1 - Living Room



Dimensions: 17'3" x 14'7"
Area: 255 sq. ft
Counted as living area: Yes

Heated: Yes
Finished: Yes
Enclosed: Yes
Contiguous: Yes
Permitted: Yes
Wet space: No
Addition: No
Conversion: No

5 Floor 1 - Kitchen

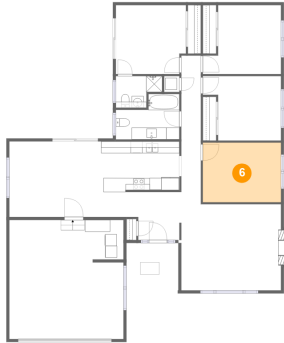


Dimensions: 13'3" x 12'10"
Area: 137 sq. ft
Counted as living area: Yes

Heated: Yes
Finished: Yes
Enclosed: Yes
Contiguous: Yes
Permitted: Yes
Wet space: No
Addition: No
Conversion: No

5718 Southgrove Drive, Citrus Heights, California
95610, United States

6 Floor 1 - Bedroom



Dimensions: 13'3" x 10'1"
Area: 134 sq. ft
Counted as living area: Yes

Heated: Yes
Finished: Yes
Enclosed: Yes
Contiguous: Yes
Permitted: Yes
Wet space: No
Addition: No
Conversion: No

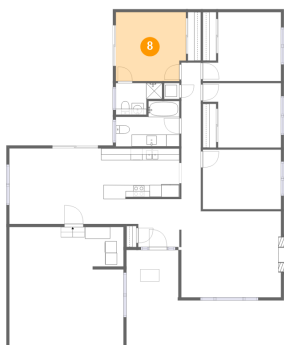
7 Floor 1 - Bedroom



Dimensions: 13'3" x 11'8"
Area: 133 sq. ft
Counted as living area: Yes

Heated: Yes
Finished: Yes
Enclosed: Yes
Contiguous: Yes
Permitted: Yes
Wet space: No
Addition: No
Conversion: No

8 Floor 1 - Primary Bedroom

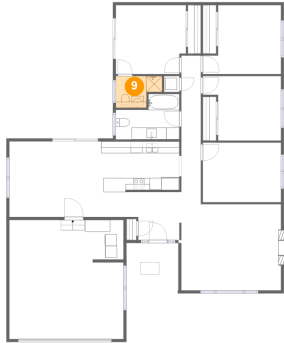


Dimensions: 11'11" x 11'8"
Area: 135 sq. ft
Counted as living area: Yes

Heated: Yes
Finished: Yes
Enclosed: Yes
Contiguous: Yes
Permitted: Yes
Wet space: No
Addition: No
Conversion: No

5718 Southgrove Drive, Citrus Heights, California
95610, United States

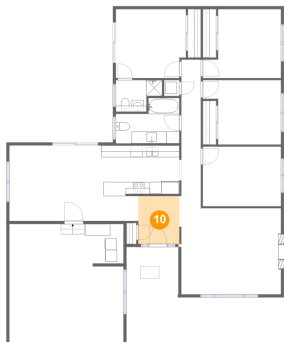
9 Floor 1 - Bath



Dimensions: 7'10" x 5'5"
Area: 35 sq. ft
Counted as living area: Yes

Heated: Yes
Finished: Yes
Enclosed: Yes
Contiguous: Yes
Permitted: Yes
Wet space: Yes
Addition: No
Conversion: No

10 Floor 1 - Foyer



Dimensions: 7'0" x 8'2"
Area: 57 sq. ft
Counted as living area: Yes

Heated: Yes
Finished: Yes
Enclosed: Yes
Contiguous: Yes
Permitted: Yes
Wet space: No
Addition: No
Conversion: No

11 Floor 1 - Dining Area

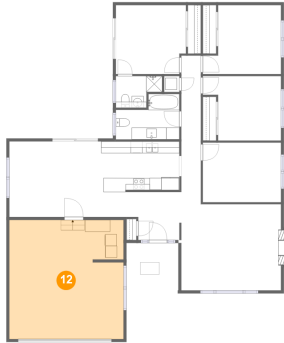


Dimensions: 15'7" x 13'4"
Area: 203 sq. ft
Counted as living area: Yes

Heated: Yes
Finished: Yes
Enclosed: Yes
Contiguous: Yes
Permitted: Yes
Wet space: No
Addition: No
Conversion: No

**5718 Southgrove Drive, Citrus Heights, California
95610, United States**

12 Floor 1 - Garage



Dimensions: 19'4" x 20'2"
Area: 387 sq. ft
Counted as living area: No

Heated: No
Finished: No
Enclosed: Yes
Contiguous: Yes
Permitted: Yes
Wet space: No
Addition: No
Conversion: No

13 Floor 1 - Bedroom



Dimensions: 13'3" x 10'11"
Area: 125 sq. ft
Counted as living area: Yes

Heated: Yes
Finished: Yes
Enclosed: Yes
Contiguous: Yes
Permitted: Yes
Wet space: No
Addition: No
Conversion: No