

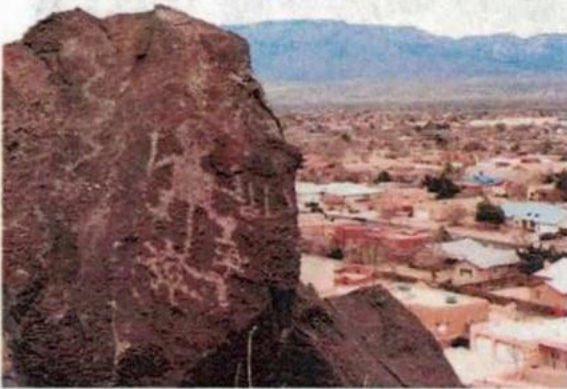
# MetroABQ Real Estate Newsletter



Including Albuquerque, Rio Rancho, Corrales, Placitas, and the East Mountains.

February

## Where are these...and why is it so important?



### Dedicated Westside Greenspaces: The Petroglyph Escarpment & Three Sisters Volcanoes



Welcome to **Boca Negra Canyon**, in the MetroABQ's Westside Petroglyph National Monument. Boca Negra Canyon, above, is Albuquerque's most visited petroglyph site; the unique rock-art and amazing city views are reasons why. Boca Negra sits on the West Mesa escarpment, which is a 17-mile long cliff of basalt boulders carved about 200,000 years ago when six volcanoes erupted, causing lava to flow "down old arroyo channels, forming peninsulas that have since eroded away to form canyons." [~NPS.gov](http://www.nps.gov)

*The escarpment, volcanoes and the dedicated westside greenspaces of the Petroglyph National Monument are extremely important to the MetroABQ area due to the Urban Heat Island effect.*

Read about it on page three.



**Chris Lucas**  
Real Estate

Chris Lucas  
[www.ChrisLucasABQ.com](http://www.ChrisLucasABQ.com)  
[Chris@chrislucasabq.com](mailto:Chris@chrislucasabq.com)  
c. 505.463.5317



## MetroABQ's Urban Heat Island & The Petroglyph Monument

An Urban Heat Island (UHI), found in metropolitan areas, is when the city temperature is considerably warmer than the surrounding rural areas, due to human activities. In these areas, the temperature is often much higher at night, and the effect is more pronounced during the summer and winter. Urban Heat Islands are caused by dark or massively solid surfaces, which absorb/collect heat, then release that heat at night; asphalt, concrete and tar are good examples—think of large paved parking lots, tar and gravel roofs and concrete arroyos and buildings. A lack of vegetation is another reason for UHI effects: with fewer trees, cities lose essential cooling effect and valuable shade; and the removal of carbon dioxide, created by the trees, adds to the temperature rise. Besides the increase in temperature, UHI's can alter cloud patterns and trap particulate matter below cooler layers, creating pollution. UHI's increase the demand for energy—air conditioners run longer—which costs more, and creates more waste pollution. An example of the Urban Heat Island effect is the weather forecast: notice the temps up & down the Rio Grande Valley—the Metro temperature is often higher than areas north or south.

Planting more trees and vegetation, which provide shade and emit CO<sub>2</sub>, can combat the Heat Island effect. White rooftops—rubber membrane/TPO roofs—reflect heat and minimize it from absorbing into the structure. Parking lot surfaces can be made from crusher fines or turf grid, above, instead of asphalt, and should have vegetation anywhere there are not parking spaces, to minimize heat absorption, and so no spots are lost to the greening.



### What does this have to do with Petroglyph National Monument?

Petroglyph National Monument is a 7200+ acre dedicated greenspace on the western edge of the city; as growth continues west, the greenspace will become more valuable. It's a natural buffer zone and wild urban oasis. At Petroglyph, the lush monument mesa-top grasslands & canyons already absorb CO<sub>2</sub> and use the sunlight & heat to create the myriad plant & animal life found there, while producing oxygen. The Open Space allows for winds to circulate the fresher air into and around the city, mixing with the hotter UHI air.

At Petroglyph, there will not be heat-absorbing asphalt parking lots and large dense concrete buildings to store then emit heat at night; the vegetation will help keep the temperature more stable during the hotter months. From NPS: "This entire area, including the volcanoes, mesa top, arroyos, canyons, cliffs, and surrounding views, is part of a living cultural landscape." The MetroABQ is lucky to have this dedicated greenspace.

I am honored to list a wonderful Westside home in the shadow of Boca Negra Canyon.

**6209 Whisper Ridge Drive NW**, sits in the Northwest Heights near Montano and Unser Blvds, but tucked away in the limited-access Shadow Ridge neighborhood, near the Petroglyph National Monument. Look for the yellow star on the previous page map.



**6209 Whisper Ridge Drive NW** has three bedrooms, three baths, a rare three-car garage, occupying ~1750sqft with a spacious wraparound yard. Also: an amazing Master Bedroom balcony with views to the south toward the Volcanic Escarpment, and stunning eastern views toward the Sandia Mountains--the photo to the right is from the Master Bedroom balcony. The home will be Active and available in a week; if you can't wait, call me to schedule a private showing.

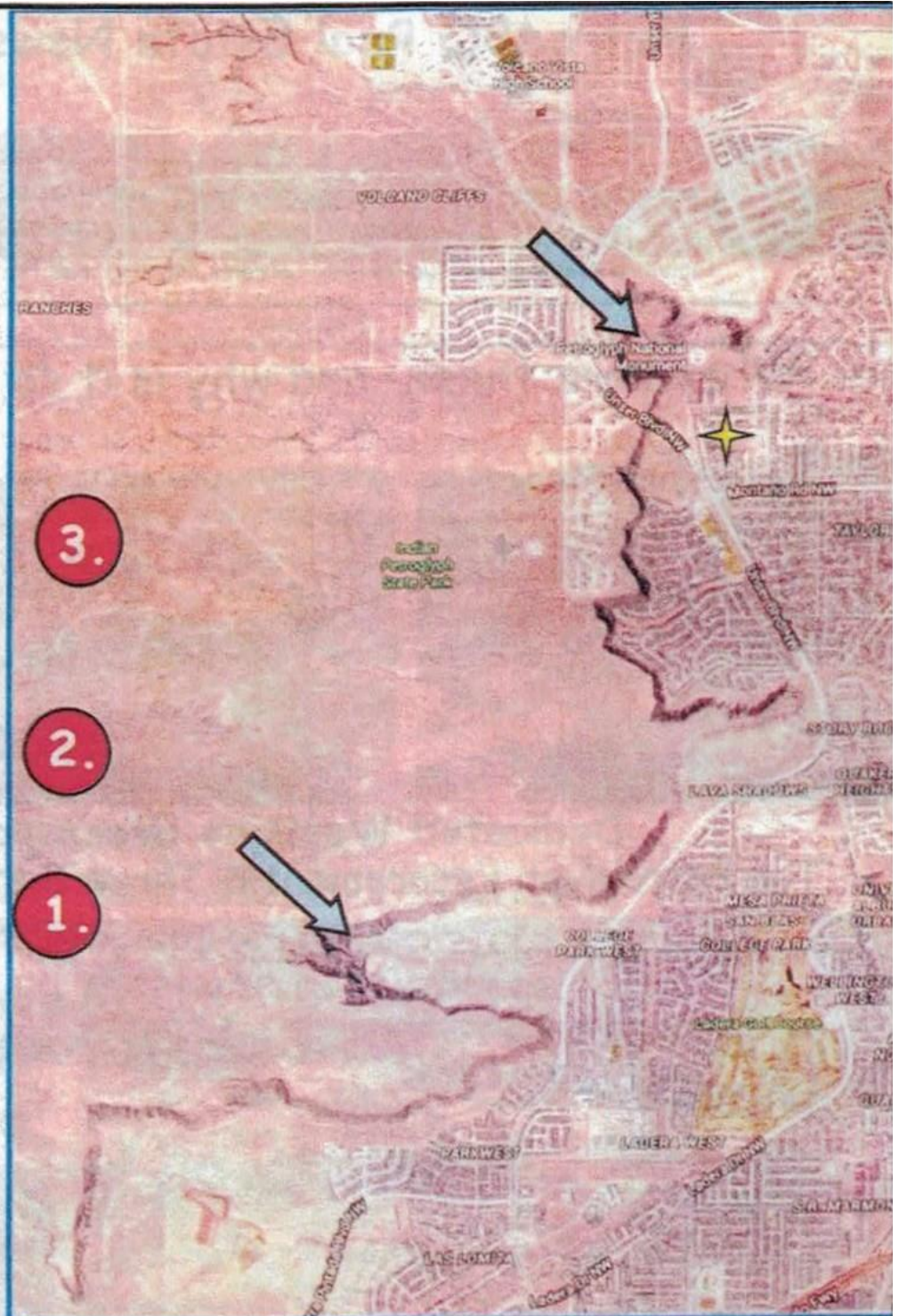
## The Three Sisters & Petroglyph National Monument

The lush Rio Grande Valley and the stunning remnants of the Westside's three largest volcanoes has attracted settlers here for thousands of years. Early people struck the dark basaltic surfaces of the escarpment rock to reveal lighter surfaces below, creating petroglyph art.

There are more than 25,000 petroglyph images chipped into the rock. From [NPS.gov](http://NPS.gov), "Perhaps 90% of the petroglyphs were created using the Rio Grande Style, which developed about A.D. 1300. The Rio Grande Style includes human figures such as the flute player or dancers; masks and masked figures and animals, including birds, serpents, mountain lions; spirals and geometric designs."

The West Mesa Volcanoes may look a little barren from across the river, but upon further inspection, they are teeming with plant and animal varieties. NPS: "The Volcanic Escarpment contains sandy soil and richer habitat than the surrounding desert landscape. A wider variety & greater number of plants and animals are found here--which in turn have attracted people to the area from the earliest of times."

The amazing Rinconada Canyon is the lowest blue arrow on the map, right, and Boca Negra Canyon is the top blue arrow



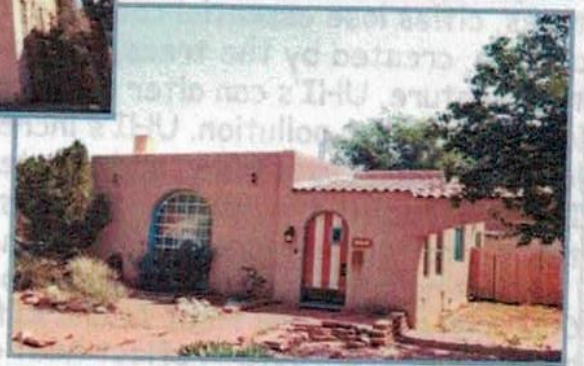
Rinconada & Boca Negra Canyons & the Volcano Cones: JA, Black and Vulcan.

From what is now called Atrisco Vista Blvd, formerly Paseo del Volcan, there is easy access to the Three Sisters--the largest of the six basalt volcanic cones rimming the Westside. Starting with #1, JA Volcano is the easiest hike; #2, Black Volcano has a 'moderate' degree of difficulty, according to NPS. The tallest is the Vulcan Volcano, #3, which, from NPS, "the level top is a mini-volcanic valley;" the views of the city from there are extraordinary!

Where do you want to be?  
Selected MetroABQ Listings



Click to  
view the  
Visual Tours  
for each  
property.

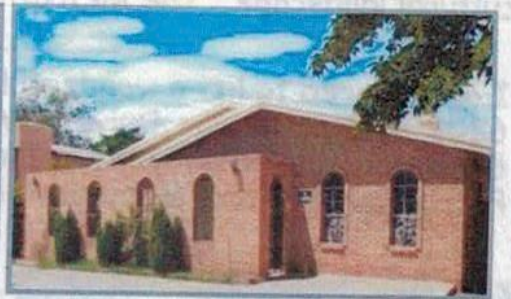
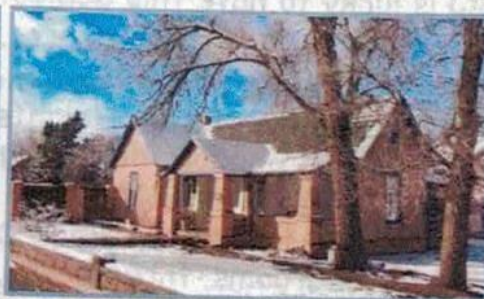


Pending...

Silver Hill (SE)

Huning Highlands (SE)

North Valley (NW)



Recently Sold...

Spain Road (NE), McDuffie Park (Near NE), Hyder Park (SE Heights), Foothills (NE)

