

MetroABQ Real Estate Newsletter



Including Albuquerque, Rio Rancho, Corrales, Placitas, and the East Mountains.

Welcome to the new **January 2018** Visitors Center

Now it's easier to find your way... The Nob Hill Visitors Center is a New Year's addition to one of the most walkable areas of the city. Located on Central Ave & Tulane St in the recently remodeled Re/Max Select real estate building (3401 Central Av NE) & next door to Il Vicino pizzeria, the Visitors Center is focused on becoming a useful neighborhood meeting place, & especially helpful for visitors.

The Mayor liked the idea: "When folks were driving across the country, they would stop in Nob Hill typically to eat & shop," new ABQ Mayor Tim Keller, right, said during the ribbon-cutting ceremony. "And it was really one of the jewels along that entire Route 66 path," he said. "...it still is for the City of ABQ." Read more on the next page...



Check out: **FreeABQImages!**

The image to the left is one of the free-to-use images on the website FreeABQImages.com. It's "A collection of digital images that seeks to capture the vibrancy & diversity of Albuquerque's people, culture & economy. Available to anyone, for free!"

See more on page four.

Tree New Mexico
Read about it on page three...



Chris Lucas
www.ChrisLucasABQ.com
Chris@chrislucasabq.com
c. 505.463.5317



Trees are important: Tree New Mexico is too...

Tree New Mexico asks: "Why plant trees in the desert?" Their website provides dozens of answers, including the best trees to plant in the MetroABQ, including Rio Rancho, Corrales, Placitas, the South Valley & East Mountain Communities. See [the list](#) below, which places the trees in categories of Small, Medium & Large..



Then &

	Tree Common Name	Size	Link
1	Catalpa	s	Catalpa speciosa
2	Chastetree (Vitex)	s	Vitex agnus-castus
3	Chitalpa	s	Chitalpa tashkentensis
4	Chokecherry	s	Prunus virginiana
5	Crabapple	s	Malus 'Robinson'
6	Crapemyrtle	s	Lythraceae Lagerstroemia indica
7	Desert Willow	s	Chilopsis linearis
8	Desert Willow, Bubba	s	Chilopsis linearis 'Bubba'
9	Eastern Redbud	s	Cercis canadensis
10	Hackberry	s	Celtis occidentalis
11	Hawthorn (Thornless)	s	Crataegus crus-galli inermis
12	Maple Box Elder	s	Acer negundo
13	New Mexico Olive (Privet)	s	Forestiera neomexicana
14	Oak (Gamble)	s	Quercus gambelli
15	Oak (New Mexico Live/ Texas)	s	Quercus fusiformis
16	Pear (Autumn Blaze/Calery)	s	Rosaceae Pyrus calleryana
17	Plum (Krauter's Vessuvius)	s	Prunus cerasifera 'Krauter's Vessuvius'
18	Soapberry	s	Sapindaceae Sapindus
19	Smoketree	s	Anacardiaceae Cotinus
20	Elder (Mexican)	m	Sambucus mexicana
21	Goldenrain Tree	m	Koeleruteria paniculata
22	Kentucky Coffeetree	m	Fabaceae Gymnocladus dioica
23	Pear (Chanticleer)	m	Pyrus calleryana
24	Pine (Afgan)	m	Pinus eldarica
25	Pine (Pinyon)	m	Pinus edulis
26	Box Elder /Sensation Maple	L	Acer negundo 'Sensation'
27	Cedar (Deodar/Cedar of Lebanon)	L	Pinaceae Cedrus deodara
28	Cottonwood (Fremont)	L	Populus fremontii
29	Cottonwood (Lanceleaf)	L	Populus acuminata
30	Elm (Acolade)	L	Ulmus japonica x wilsoniana 'Morton'
31	Elm (Allee)	L	Ulmus parviflora
32	Elm (Lacebark)	L	Ulmaceae Ulmus parvifolia
33	Ginko Biloba	L	Ginkgoaceae Ginkgo biloba
34	Honeylocust	L	Fabaceae Gleditsia triacanthos
35	Japanese Pagoda	L	Fabaceae Styphnolobium
36	Japanese Zelkova	L	Ulmaceae Zelkova serrata
37	London Planetree	L	Platanus x acerifolia
38	Maple (Big Tooth)	L	Acer grandidentatum
39	Oak (Bur)	L	Fagaceae Quercus macrocarpa
40	Oak (Gray)	L	Quercus grisea
41	Oak (Shumard)	L	Quercus shumardii
42	Oak (Texas Red)	L	Quercus buckleyi
43	Pine (Austrian)	L	Pinus nigra
44	Pistache (Chinese)	L	Anacardiaceae Pistacia chinensis

The Afghan Pine tree above, just a sapling then, was planted almost two decades ago. It was skinny & stood at five feet. Almost 20 years later, it is close to 20 feet tall, and shades good sections of my & my neighbors' yards. Tree NM explains why planting Evergreens on the north sides of properties is smart (summer shade + you keep any winter passive solar heat gain, plus O2 year-round), & describes the best trees for our desert climate.



Now...

804 5th Street NW

is a 1/4 acre lot in a prime Downtown location: situated just off
 Boly Lomas Blvd near to the Bernalillo County Metropolitan
 Courthouse, the Metro Motor Vehicles Department, and Metro
 Court Parking Garage, there is always plenty of parking for your-
 self and your clients or tenants. On the west side of the property
 are numerous professional offices, and the iconic
 Stone Street Cafe is half a block away.




View Now

3-D Virtual Walking Tour




OPEN HOUSE

409 Ridge Place NE

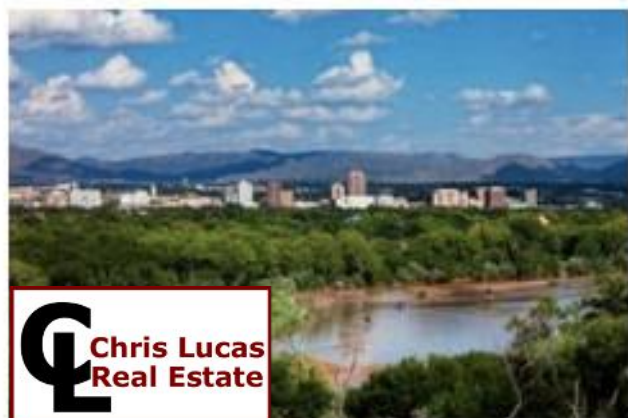


Sunday January 28th, from 1-3pm.
 Call Chris at 505.463.5317 for details.

FreeABQImages.com

is a new website that gathers images mostly from the camera of John Yost, the creator/owner of [Marble Street Studio](#), located downtown near the [Barelas Railyards](#). After decades of creating iconic images of the MetroABQ, he is giving them back for all to use. Simply sign into the site and begin downloading the thousands of images.

My favorite way to find photos is to use the Search by Tag engine to the right of each page. Type or scroll down to "Skyline," for example, and see what all the fuss is about. I was using [Large_evening_skyline.jpg](#) (below) as my newsletter masthead--taken off-line over a decade ago--before I understood that I had to pay for the image. That's when I met John Yost. Now that he's gone public with his images, they are all free to use. Enjoy!!



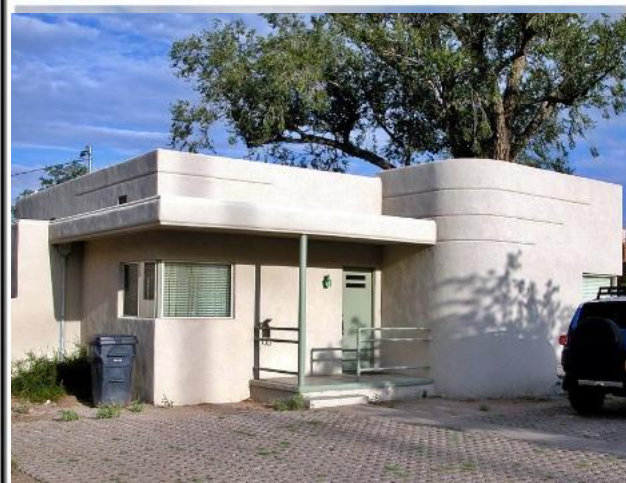
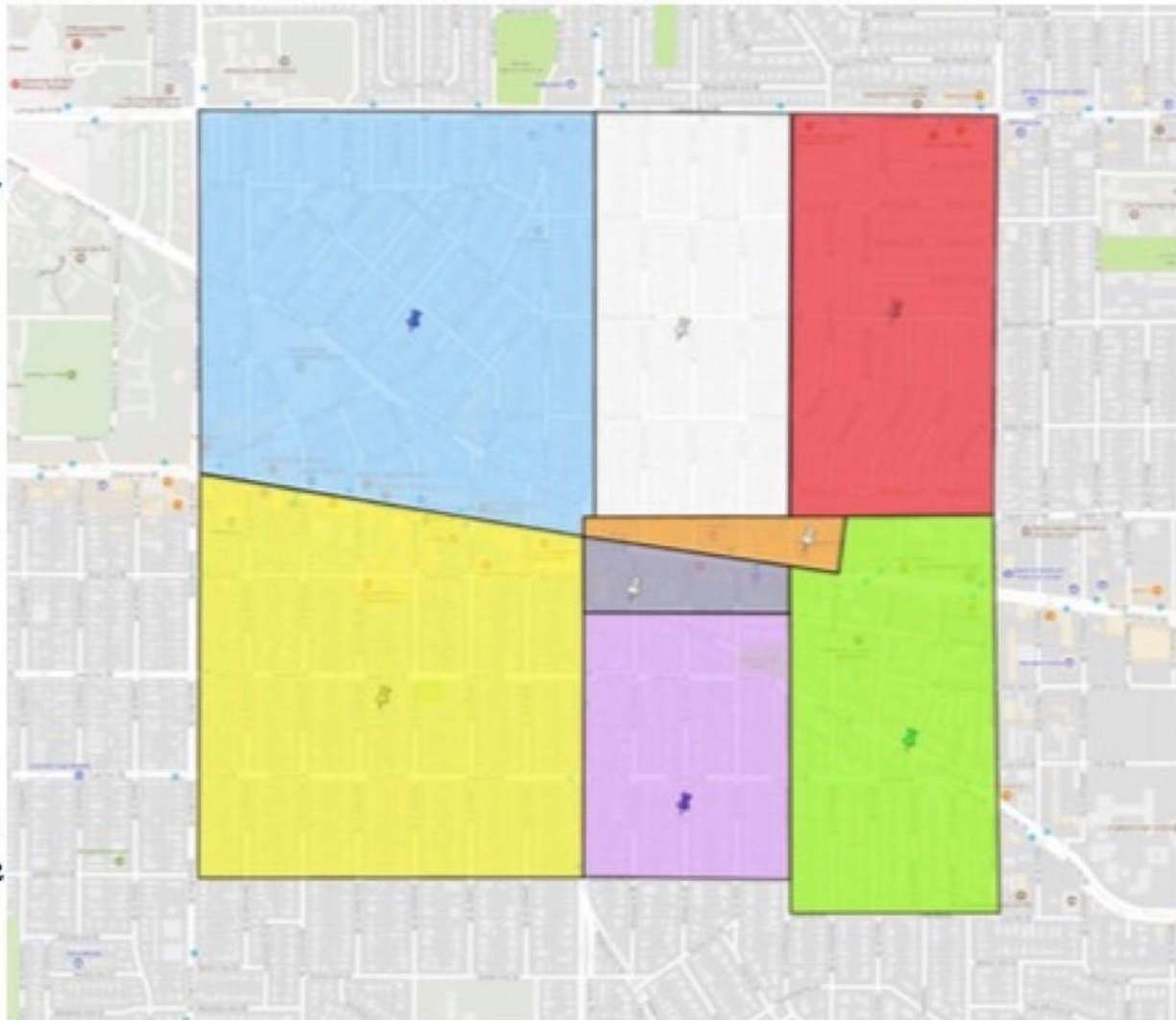

Chris Lucas
Real Estate

505.463.5317

Nob Hill Visitors Center Continued...

Funded privately & in conjunction with federal funds, the Center will help visitors find their way to other points of interest in & around the greater Nob Hill area, providing maps, coupons for local businesses and information on events. One cool feature is a large screen interactive set-up, allowing you a floating virtual-reality tour over the MetroABQ. In conjunction with Nob Hill Main Street and reDiscover Nob Hill, the center will highlight the historic Nob Hill Neighborhoods, focusing on the single-family, duplex & apartment residences, along with historic commercial buildings, dating back over a hundred years. Nob Hill recently celebrated it's 100th year...

At right is a map of the eight Nob Hill neighborhoods, covering almost 150sq blocks-- a full square mile--in the heart of the MetroABQ. In the Monte Vista & College View areas, in blue & white respectively, 82% of the homes are considered contributing historic properties. Popular in the early-to-mid 1900's, the styles include Spanish Pueblo Revival, SW Vernacular,



Territorial, Bungalow, Mediterranean, Streamline Moderne, Mid-Century Modern, & Ranch styles.

I've worked with Re/Max Select for the last year; my office is still just around the corner on Silver Av & Wellesley Dr, at 122 Wellesley SE. The public face of the company will be on Central Av. I love that the company I work with supports the Nob Hill visitors center. The Center compliments other community-minded needs I support yearly, like the Children's Miracle Network, Habitat for Humanity, Animal Humane, homeless shelter donations & [Wild Spirit Wolf Sanctuary](#) wolf sponsorships.