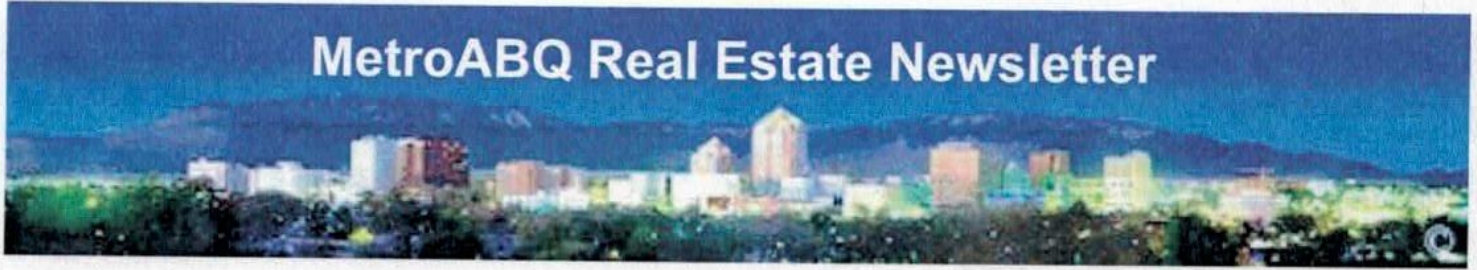


MetroABQ Real Estate Newsletter

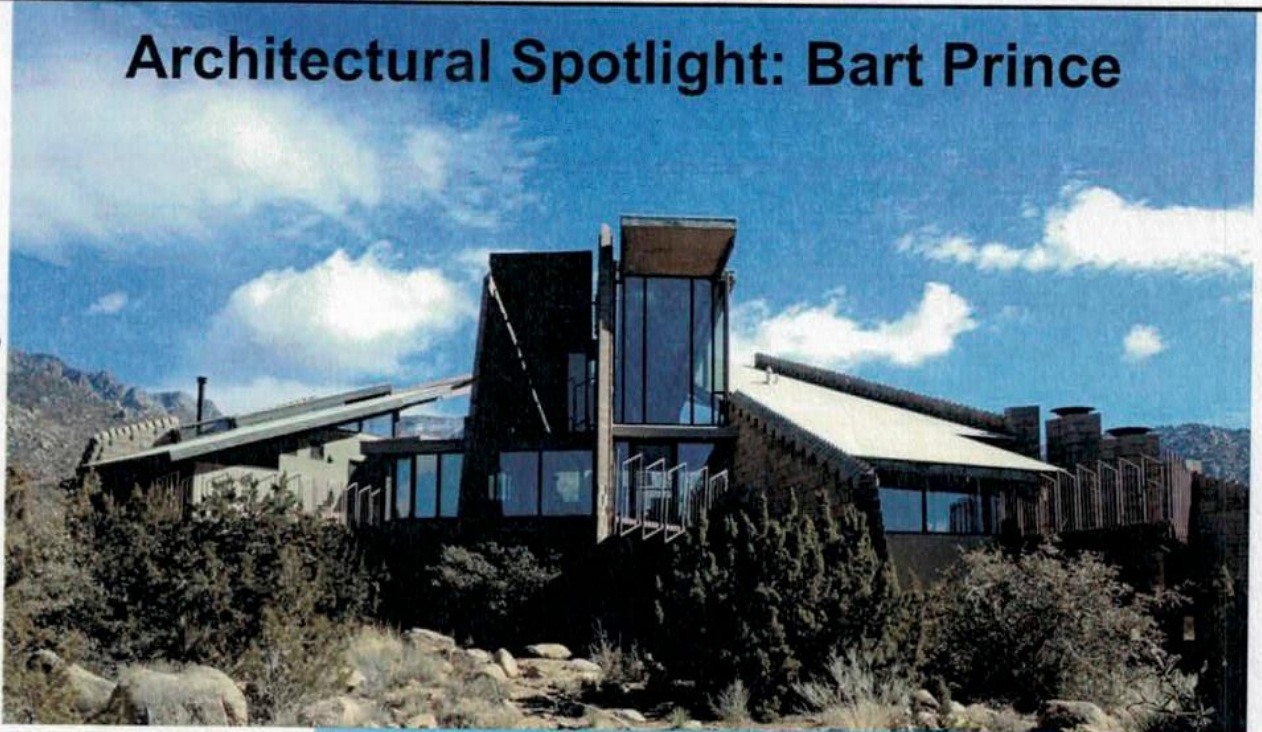


Albuquerque, Rio Rancho, Corrales, Placitas, Valencia County & the East Mountains

March 2012

Architectural Spotlight: Bart Prince

In the MetroABQ, we are very fortunate to have numerous varieties of housing styles to live in.



There is Ranch, Spanish Pueblo Revival, Tudor, Territorial, Mediterranean, Mid-Century Modern, Streamline Moderne, Craftsman, Bungalow, Victorian, Colonial, a Log Cabin or two, at least one converted Water Tank, Southwest Vernacular, Rammed Earth, Contemporary, Post-Modern, and more.

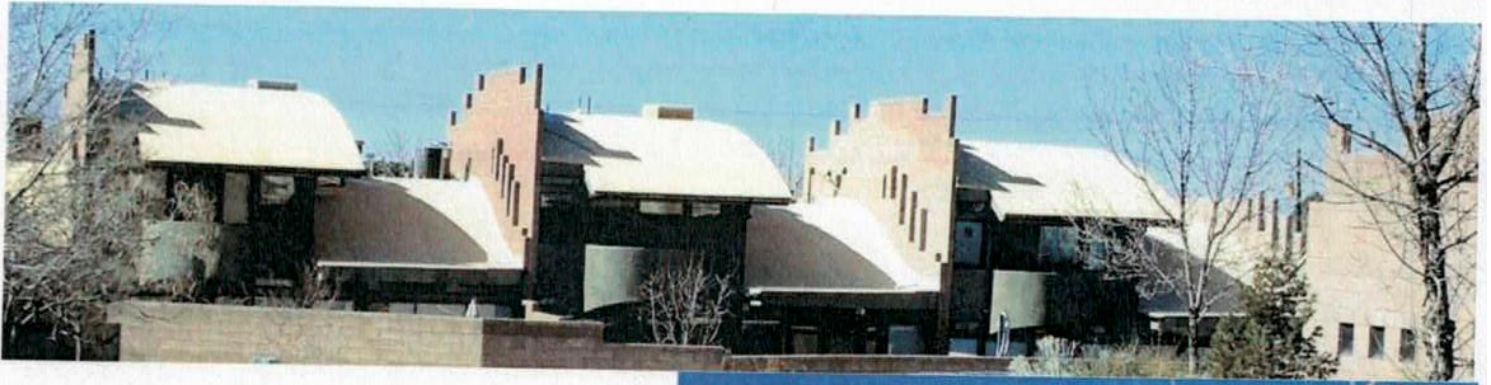
...And then ABQ has the organic, quirky structures of world-renowned architect and UNM professor Bart Prince...



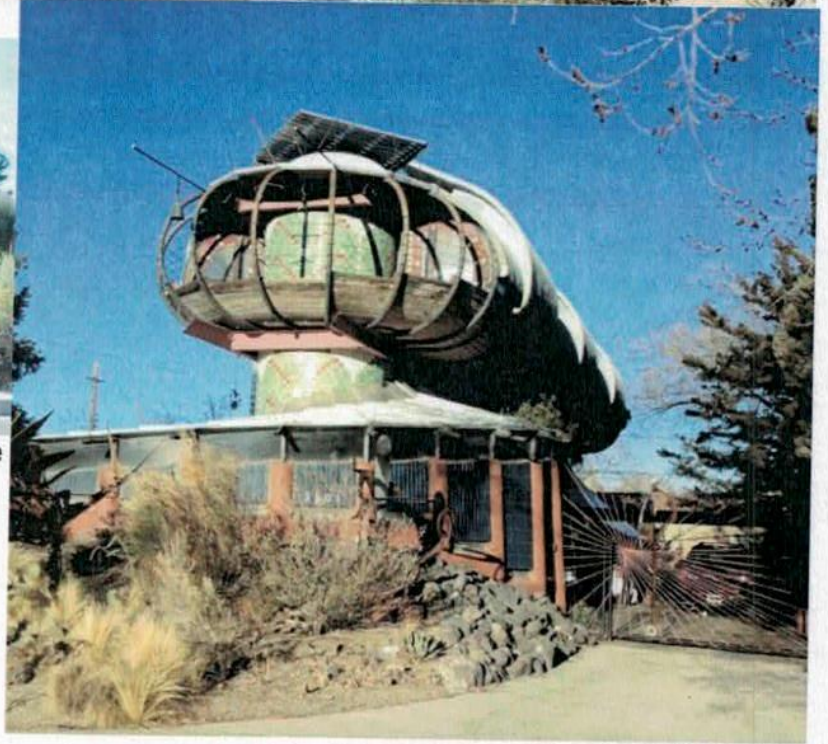
Chris Lucas

Visit my website at:
www.ChrisLucasABQ.com
jebalucas@yahoo.com
c.505.463.5317

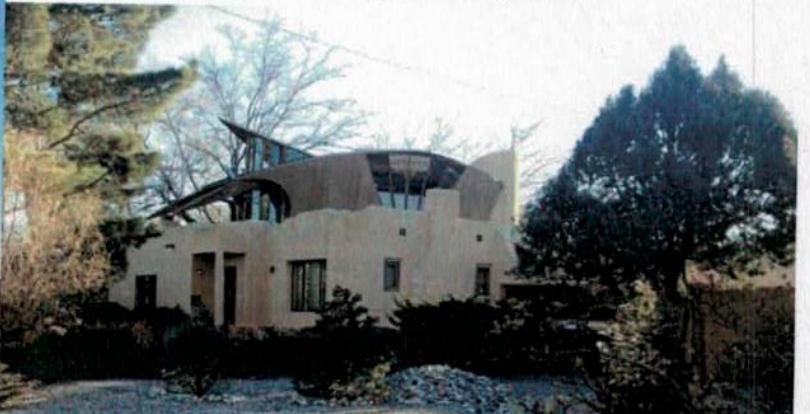
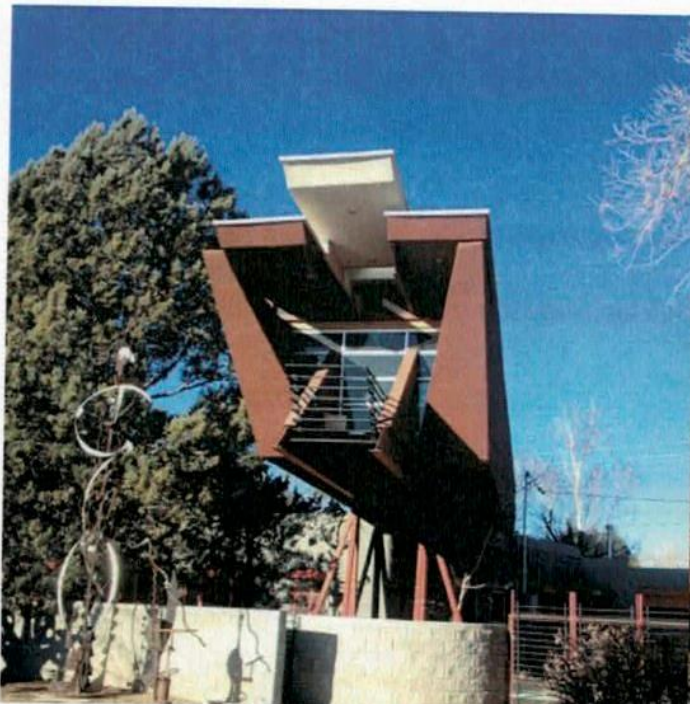




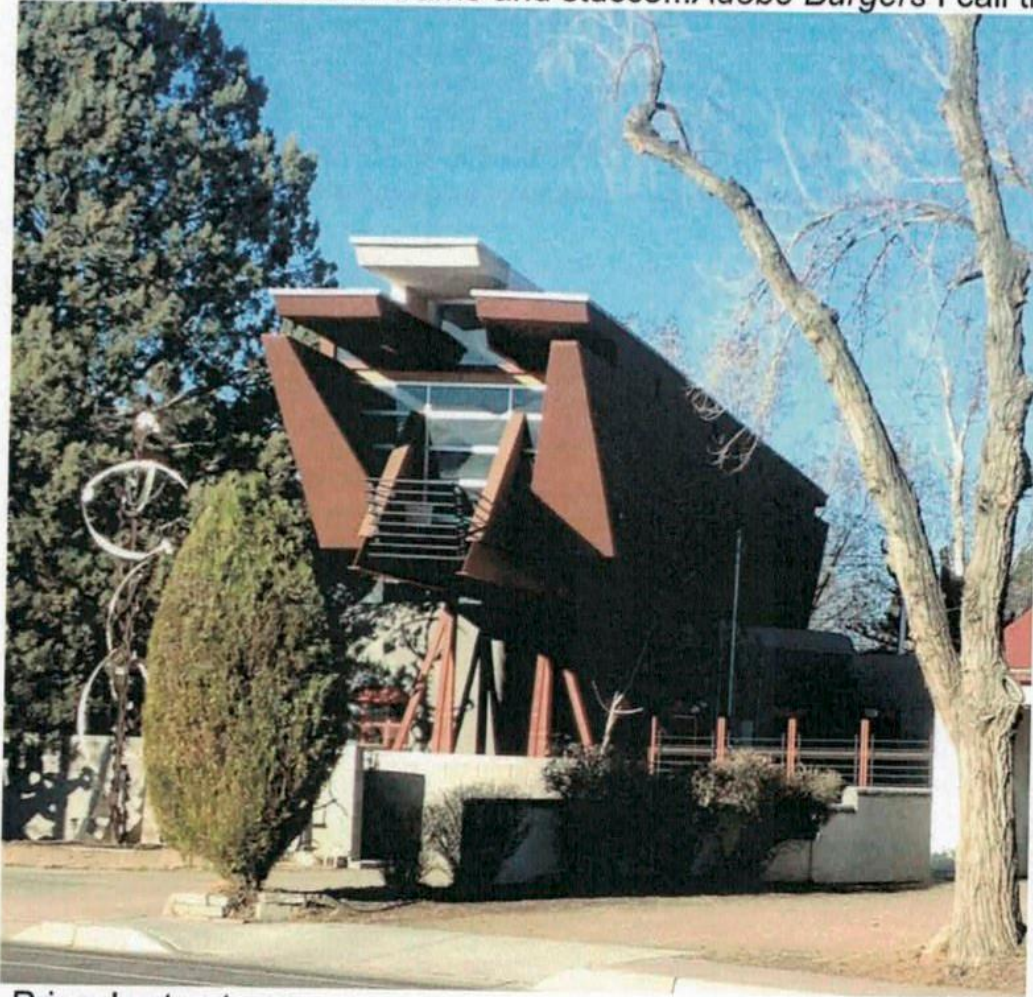
At top are the Parsifal Townhomes near the intersection of Eubank and Montgomery. I worked with a friend to purchase one recently--their inside proportions reflect the same exterior design: sharp corners and organic curves, and they are deceptively spacious. Directly above: an Altura Park creation with incredible mountain views. First page top: Scherger/Kolberg house east of Tramway near Sandia Open Space.



In Nob Hill east of the UNM Campus are three Bart Prince-designed buildings on Monte Vista Blvd. Above and bottom of page one is his home and studio; below to the left is the Prince Studio Addition, which sits next to his personal residence; directly below is what I call the Jor-EI house, a Prince-designed creation set atop a 50 year old South West Vernacular-style house, and nicely obscured somewhat behind tall pines.

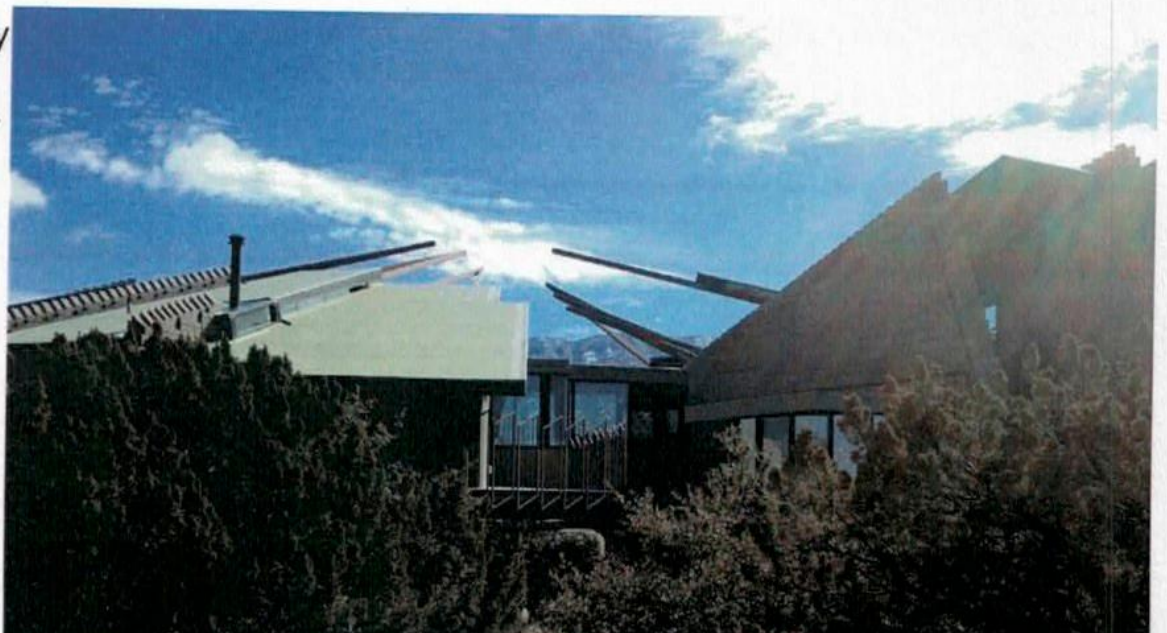


Bart Prince, born in ABQ and raised here and in Santa Fe, said he has always hated fake adobe structures--even as a little kid. At TheHouseBeneathTheMountain.Blogspot.com , an interview with him describing his Scherger/Kolberg house seen on page one and below, Prince talks about how "a residence is a temple for the people who live there...celebrating the natural environment." Unfortunately though, he continued, "The typical way people build adobe, say, or buildings that they think are sort of indigenous-looking, is just to imitate what they've seen--and usually it's made out of frame and stucco...*Adobe Burgers* I call them."



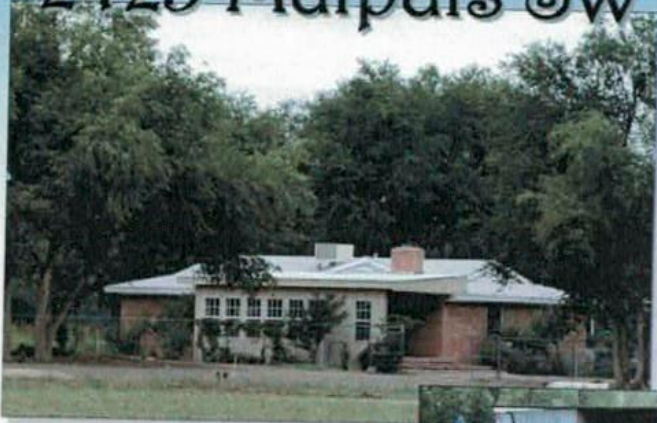
His structures are often called Organic, not because they are necessarily created using only earth-based materials like stone and wood, but because he works from the inside-out. From a Dwell magazine interview, Prince explained that he likes "to start completely fresh each time...Organic is a process and a way of thinking--an idea that the whole thing develops almost like an organism does; the forms (of the building) grow out of each situation...There is never any one thing that always comes out--so I don't know what is going to come out of (each project) until it starts to develop."

Prince's structures have a touch of fantasy about them. He often uses sharp, unconventional angles amid flowing curves, a lot of glass, split-face block and steel. He has an affinity for structures with no discernible entrances, like the home to the right. "Architecture to me is like music" he has said, "it has a quality of mystery about it."



Selected Listings

2425 Malpais SW



Rare 5.17 acres of
Lush, Acequia-fed
South Valley Farmland

MLS # 719133
\$539,000



WANTED

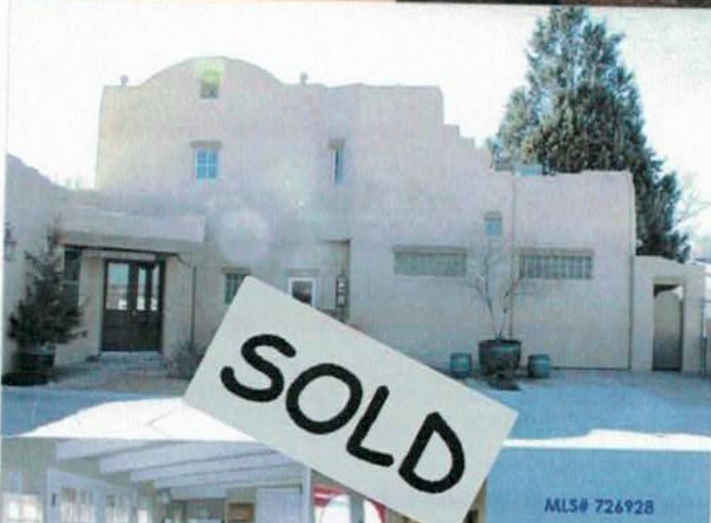


ROUTE 66

1930'S MOTOR LODGE
Now A Six-Unit Apartment Complex &
Highly Profitable Cell Tower On The Two-Acre
Property.

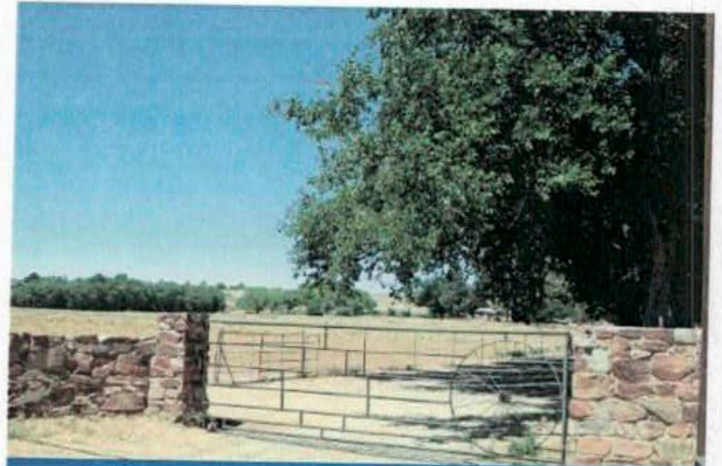
[Click Here To View These and My Other Visual Tours!](#)

5964 Guadalupe Trail NW



SOLD

MLS# 726928



20 Acres on Coors Blvd can be split
into Five 1-acre homesites.



This is Archonony Land
FOR SALE