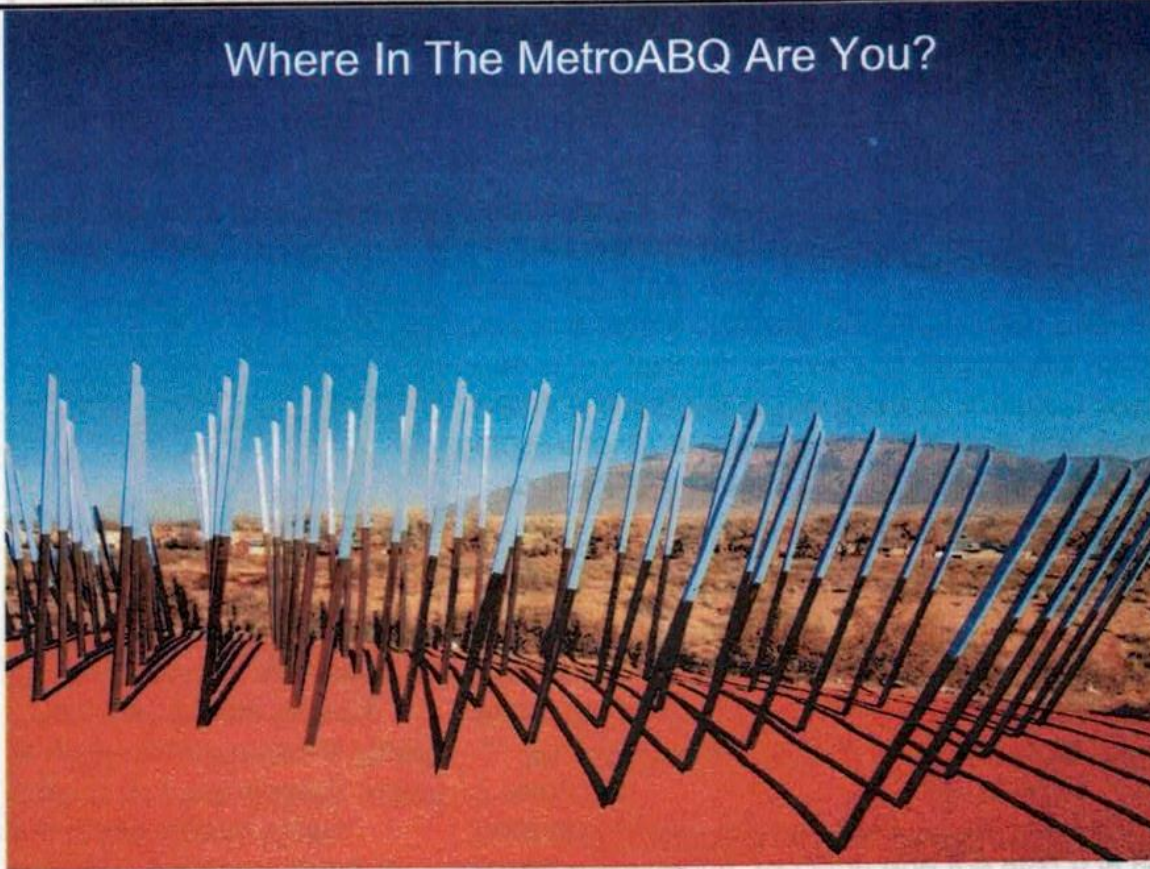


MetroABQ Real Estate Newsletter

Including Albuquerque, Rio Rancho, Corrales, Placitas, Valencia County and the East Mountains.

March 2013

Where In The MetroABQ Are You?



You may pass by this recent art installation and only notice it as the colors slip from your view, while you maneuver among the numerous lanes of traffic on a busy Westside corridor. The Sandia Mountains are in the background and the Rio Grande is just down the hill. Also, what is a Jetty Jack? Turn to the next page to find out...

Welcome to Rinconada Canyon -- Albuquerque's First Graffiti



Probably close to 700 years ago, ancestors of the Pueblo Indians came to the MetroABQ area, settling along the Rio Grande. The 1200+ petroglyphs in Rinconada Canyon can be found on ABQ's Westside, in the Petroglyph National Monument.

For the photo essay, turn to page three.



Chris Lucas

Visit my website at:

www.ChrisLucasABQ.com

jebalucas@yahoo.com

c. 505.463.5317

o. 505.293.8400



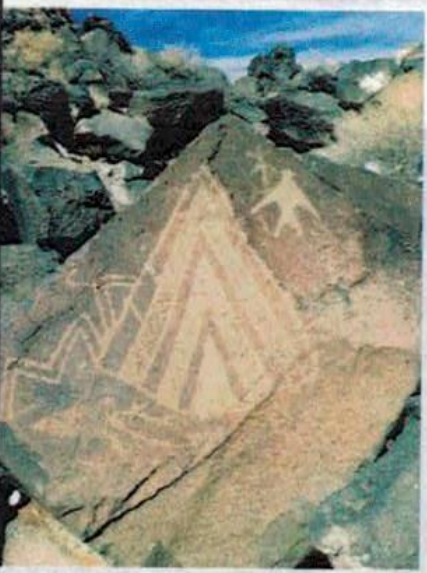
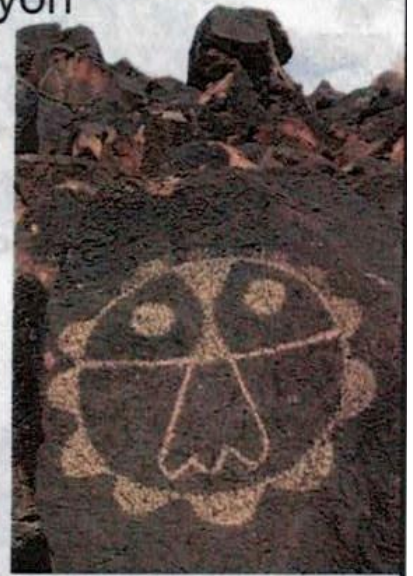
**Chris Lucas
Real Estate**



The Petroglyphs at Rinconada Canyon

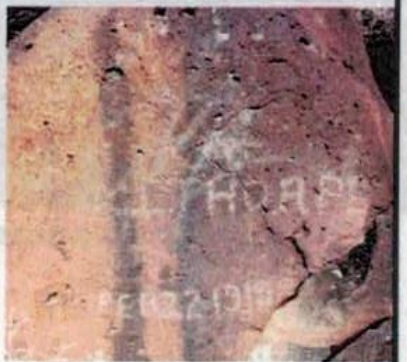


The Rinconada Canyon hiking trail begins at the Petroglyph National Monument parking area, at the end of St. Joseph's and Unser Blvd, on the MetroABQ's Westside. The trail wends a mile into the main canyon, passing through numerous little canyons along the way. The images you will see include human-like figures, concentric circles/spirals, animal figures, and geometric designs. The ancient petroglyphs can easily be found early in the hike along the path; however, some of the most interesting can be discovered by climbing onto the rocks and looking behind the basalt lava flows. According to the [National Parks Service website](#), Pueblo Elders believe that the petroglyphs choose when and to whom they reveal themselves. You may not see them all...



Below: Rinconada from deep in the canyon, facing toward the city.
Page 1: I colored the Chicken green. This page, right: Grafitti from February 22, 1919, scrawled on the lava rock. Top left: I colored the Alien Bug. For more petroglyph images, click here:

MetroABQrealestate.com



Unless stated otherwise, all photos and text are by Chris Lucas.



FLYWAY by Robert Wilson, 2011

FLYWAY sits on the east side of Coors Blvd, between Montano and Eagle Ranch roads. It sits at the entry to the Open Space Visitor Center and Art Gallery, which is off BosqueMeadows Road. The Open Space Visitors Center provides access to the Bosque Trails along the Rio Grande; the Art Gallery is ever-changing.

Robert Wilson wrote in his Artist's Statement that: "FLYWAY was designed and built as a tribute to the Sand Hill Cranes and the natural world they inhabit here on their migratory journey: the River, the Bosque, the land and the sky. It is constructed of steel beams recycled from the jetty jacks that stood on the Bosque for 7 decades.

"FLYWAY was inspired by visual forms that cranes call to mind: the shape of a wing, the lines of neck and legs, the angles between the tip-feathers, or a cluster of tall birds on the ground. It echoes the shape of the Mountains, the arc of the sky, and the undulations of the Rio Grande and its Bosque."

What Are Jetty Jacks?

In 1943, the Army Corps of Engineers began installing jetty fields--numerous steel beams buried a few feet, with most of the beams sticking out of the Bosque, crossing each other like large 'X'es in the ground. These jetty jacks were used to 'confine the river to a stable channel' and for erosion control of the native plants along the river.

Over time, though, according to the US Army Corps of Engineers "[Jetty Jack Removal Study](#)," the "jetty jack fields have become a non-functioning eyesore that often complicate efforts toward restoration." Although not meant to be permanent structures, many of the jetty jacks are too entwined in the vegetation and are close to impossible to remove without major environmental damage to the sensitive Bosque. Still, many *are* being removed.

"Jetty jacks removed were used by the MRGCD for such things as fence posts and gate structures along the Rio Grande levee system. The U.S. Fish and Wildlife Service requested some material for construction of fish breeding facilities for the endangered Rio Grande silvery minnow."

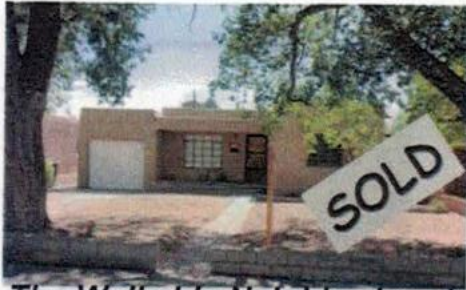
Clearly, Robert Wilson using Jetty Jacks for public art projects is another great way to recycle the metal rods.



Photo is from the Jetty Jack Removal Study

Historic District Downtown?

Community of Sandia Park?



The Walkable Neighborhood of Upper Nob Hill?



A Spacious Home in the Altura Park Neighborhood?

In Which Community Do You Want To Live?



An Updated Home in the Las Maravillas Neighborhood?

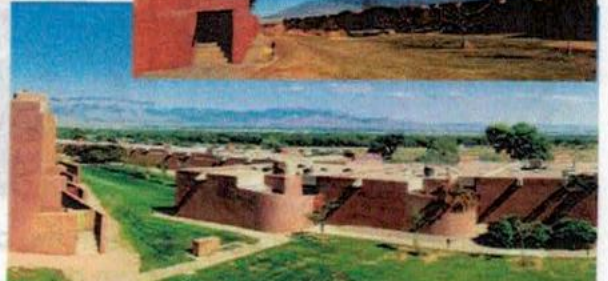


The Sweet Westside Pocket Neighborhood of Story Rock?



La Luz: Architect Antoine Predock's Historic Westside Community?

**19 Berm
6 Tennis Ct
4 Link &
1 Pool NW**



I am a dedicated seven-days-a-week real estate professional, in **the top 5% of MetroABQ Realtors**—I love this city!

I continually seek out the hidden gems in all areas for my **Buyers**, & I am a tireless promoter for all of my **Sellers'** listings. I love talking about real estate...

Chris Lucas

Owner/Broker

505.463.5317

Chris@chrislucasabq.com

ChrisLucasABQ.com

NobHillNeighborhoods.com

My 3-D Virtual Tours



**Chris Lucas
Real Estate**