

MetroABQ Real Estate Newsletter



Including Rio Rancho, Corrales, Placitas, Atrisco Valley, Los Lunas & the East Mountains.



Fall

Exploring Artist Ed Haddaway's North Valley Compound

What Are Passive Energy Zomeworks Sunbenders?



Ed Haddaway's North Valley

When offered, I jumped at the chance to visit an Albuquerque-based artist's compound--a fabulous North Valley property which includes the main house, artist's studio & boxcar gallery, among other buildings. The North Valley, a mostly rural

section of the MetroABQ along the east side of Rio Grande, is unique. It's surrounded by over a hundred thousand Burqueños, yet it still retains much of its rural character: alfalfa fields, horses behind pipe fencing, a slower pace (especially as the speed limit is a strict 25mph in much of the area). Visiting a North Valley compound can be a lush & energizing experience, especially immersed in the whimsical outdoor sculpture garden at artist Ed Haddaway's place.

Rio Grande Blvd is one of the principle arteries in the area, which is where I met a group of people one Saturday, all gathered for a presentation by Haddaway, surrounded by his lush 1.5+ acre North Valley property that served as backdrop. It's one of those properties that your eye catches as you pass, & [peeking over the top](#) of the adobe wall to see more seems reasonable.

Above, top is **Momma Bird for Momma**, a rusted steel sculpture created by Haddaway in 2022. So you know the economic tier where his arts sits, it's listed for sale at \$48,000; his smaller sculptures can sell for a few thousand dollars. Just above is **At Play Amongst The Moons**, a large abstract painted steel sculpture that stands at 17 feet. It's one of over a dozen sculptures placed throughout the property & sits along the long dirt driveway from Rio Grande Blvd.

Below is **The Critic (A Convention on the Plain of Leisure)**. which shares a theme that runs through Haddaway's work, that of a bunny in some form--usually standing & engaged.





From all angles **Early Morning Walk**, above, with artist's description below, is impressive. Standing at 18 feet tall to the tip of the young bunny's ears, the painted steel sculpture has an undeniable presence. It's a large part of, but does not envelope, the greenspace scene.

Early Morning Walk

Ed Haddaway

Painted steel, 2006

18 x 24 x 6 ft

\$150,000

Haddaway's work is part of an internal landscape projected into the external world as a form of self-preservation. Featured in this piece, a young rabbit wearing pajamas and soft, pink slippers is walking his dog, who is dressed to match. The two are monumental in size to immortalize the simplicity of a routine morning walk.





Private Studio Tour

Ed Haddaway & his wife Barbara Forshay, also an artist, were terrific hosts, both generous & gracious. In the image above, Ed is wearing a black shirt & reading from his notes, while Barbara, also in black, is sitting in the wooden chair in the foreground, watching & laughing.

Haddaway has a dry, witty sense of humor, often using known concepts in his work, but twisting them into something unexpected. He was humorous during his talk in one of their courtyards & during the tour of the property, making the group laugh along the way. His website is full of [more of his quirky creations](#).

I'd first learned about the property tour from the [Curated Creative gallery](#), which represents Ed Haddaway, & organized the open studio tour that day. The site fills in [more examples of his whimsical creations](#).

From the City of Albuquerque site, on the ABQ Museum page, is this gem [about Ed Haddaway](#):

Ed Haddaway's sculptures often represent thoughts & emotions through playful & imaginative forms. Shape, color, & references to language are embedded in this abstract sculpture. Haddaway's approach to art-making relies on a good sense of humor & an understanding of the human need & desire to connect with others. A Tree of Mixed

Metaphors invites the audience to interact with the sculpture & observe how it changes when viewed from different angles, pointing to the idea that one object or situation can have many different interpretations.



Zomeworks Sunbenders

During the studio tour, something else caught my eye--the Haddaway/Forshay main house had what looked like large arched aluminum tubes on the roof, held aloft by sticks of wood. I'd seen them before & knew them: they are Sunbenders, probably by a company called Zomeworks, & can be seen above. Bruce Davis, an architect & a client with a focus on green building, had them installed in a [converted old laundromat](#). The Sunbenders brought needed light to a darker corner of the house.

Sunbenders refract light & heat into the house during the cooler months, & reflect heat & light away from the house during the blazing summer months. Placing them on the south side of the roof, as Haddaway/Forshay did, helps create excellent passive solar heat & light gain. You can tell from the position of the Sunbenders--they're wide open--that it's no longer summertime (it was early fall).

From the [Zomeworks site](#):

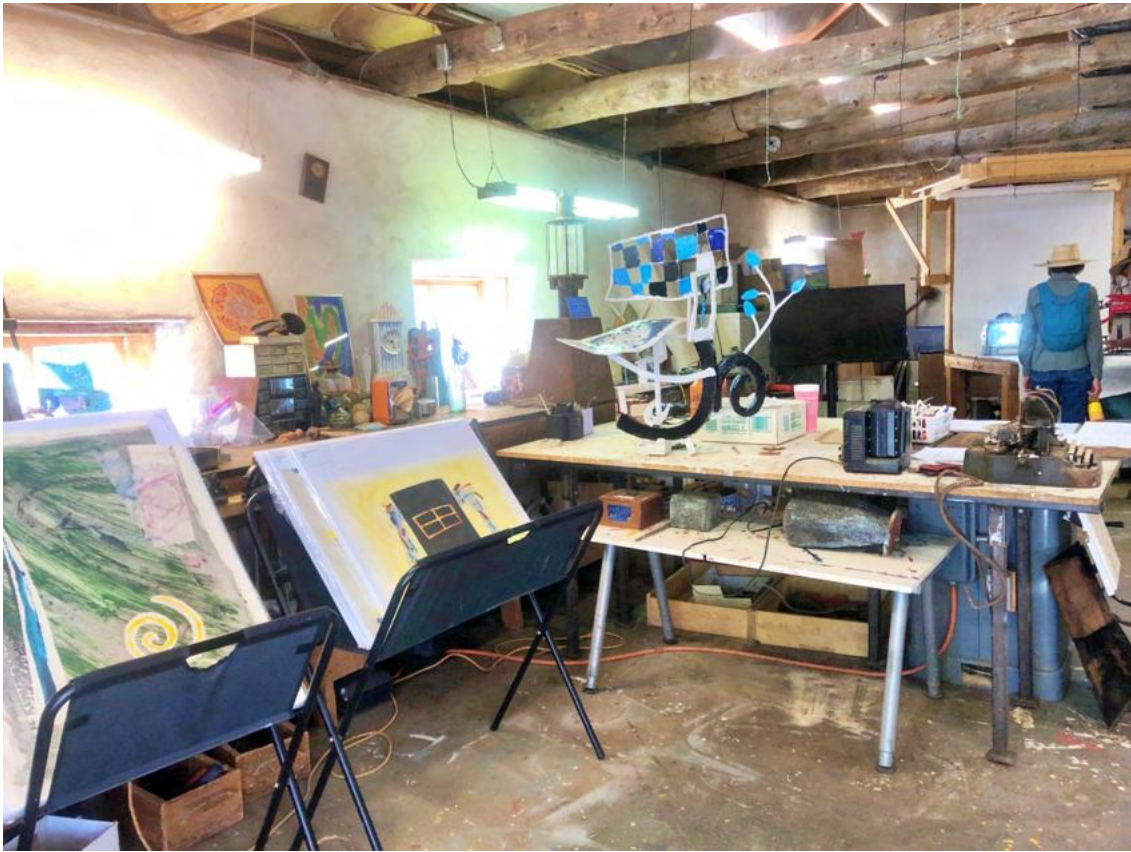
The **Sunbender**®, from Zomeworks, increases heat & light gain through a skylight in the winter; & it decreases heat gain in the summer. In the winter, a curved reflector pan directs sunlight through a skylight into the room below to increase light & heat.

In the summer a simple setting change allows the curved pan to act as a shade, reflecting sunlight back up to the sky. This action prevents heat from reaching the skylight, while allowing daylight to enter.

Ed Haddaway is unconventional, so of course the Sunbenders on his studio roof/ceiling, below, are not 'normal' either--they open directly from the roof into his work space, in lieu of operating through a skylight. So instead of the Sunbenders sitting on top of the roof, they ARE the roof. Interesting...

Another great aspect of the Sunbender is that it's all passive--there are no photovoltaic panels or other electrical equipment to buy. Sunbenders are simply lowered in the summer for shade & raised in the winter for maximum interior solar exposure. That's all that is needed to reap the benefits from the devices that tend to bend the sun.





Above & Below. Above is one corner of Haddaway's studio; below are numerous smaller sculptures found throughout the property.





Haddaway has a droll sense of humor that is integral to the whimsy of his creations. A large collection of his smaller sculptures are placed throughout the property, providing a window into his creative inner workings. He imagines abstract images--an example is below & also the 2nd image at the top--to finely detailed objects like *Ben Hare*, riding a bike down an incline, which is the title of the small piece, directly above. I like the shadow created in the background of the piece.

The titles of the fanciful sculptures describe what was then going through Ed's mind. *But for the Discreet*, *Brain Food*, *Sculpture for a Fancy House* & *A Magic House In A Dream Somewhere* are a few of the stream of consciousness titles that adorn his works. The title *With the Noisy & Amusing Absurd* (from *Les Yeux Du Monde*) may not tell you much about the piece initially; however, contemplating it for any length of time often reveals much more...





Boxcar Gallery

The image above is Haddaway's newly christened Boxcar Gallery, a recent addition to the North Valley compound. Just below is R. Bunny, holding a drawing he did of a cat. The sculpture is entitled: **Portrait of Artist as a Young Bunny**; James Joyce would be smiling...

Two images below is a scene inside the Boxcar Gallery, showcasing some of his small sculptures.





Haddaway away...

Ed Haddaway has been doing the art thing for many decades & his sculptures are found in venues around the western hemi, from Aruba to Omaha. Locally, they can easily be found around town. The [ABQ Museum](#), for example, has at least one Haddaway piece in their permanent collection. Then there's a quirky sculpture called [The Monument](#), found in the middle of a roundabout, where Menaul Blvd & Indian School Rd meet just north of Downtown.

His sculptures work very well at Tingley Beach, too, where there are at least six of his works adorning spaces around the ponds & along trails. Some are below.



Unexpected places...

Up in Santa Fe, waiting for the light at the corner of Paseo de Peralta & Bishop's Lodge Road, I noticed what appears to be another Ed Haddaway sculpture: two bunnies are engaged in an animated conversation, as they discuss what--the Santa Fe art scene? I tried to find out if it was an authentic Haddaway, but his sculptures are in so many public & private places, that the address didn't register. The sculpture clearly has the hallmarks of the continuing conversations that run around in his head

(bunnies, painted steel, quirky), that I have no doubt of its authenticity. Apparently, one never knows where you might come across an Ed Haddaway..





Coming Soon...

Have you been to La Luz?

It's a treat: historic adobe homes spread out among acres of greenspaces & tended gardens, surrounded by 40+ acres of Forever Open Space along the Rio Grande Bosque. The views are stunning.

Entering 8 Arco Court is also a treat. It's the sumptuous end unit with unobstructed Open Space, Bosque, City & Mountain views, that will leave you breathless, above. Experience it all from the large eastern courtyard.

The [3D Virtual Walking Tour](#) will be uploaded around Thanksgiving & an Open House will immediately follow. Stay tuned in this space for more details...

What an excellent opportunity to (re)discover the La Luz community...



With the hot air balloon in the background, you can probably tell what time of year it is: **Balloon Fiesta in the MetroABQ**. The image above was taken from the La Luz tennis courts, facing the mountains & overlooking the Meadow, which is the community gathering space.



As interest rates fluctuate, many people are seeking mid-to-long-term rental solutions. Good property management--**for both tenants & owners**--is more essential than ever. Going on a year-long sabbatical? Call me--I quickly find good, temporary & long-term tenants for all the properties I manage.



A One-Bedroom Duplex Apartment For Rent

Sweet fully-furnished one side of a duplex, in the historic College View Addition, one of the Nob Hill Neighborhoods. Built in 1940 with cove ceilings & many original features, it includes Art Deco door hardware, & original lighting fixtures. Dedicated back yard off-street parking space for each unit. Walking distance to shops & restaurants, close to hospitals, & nicely centrally located to all of lifes activities. [See the 3D Tour!](#) No pets please. 650sqft, \$1695/month. Call me at 505.463.5317 Thx!

[Missing something?...](#)

The article archive is here:

[MetroABQ Newsletter--Medium.com](https://www.metroabq.com/newsletter)

www.ChrisLucasABQ.com

[My Listings](#)

[3-D Walking Tours](#)

[Live Open Houses](#)

[Property Searches](#)

[Historic Neighborhoods Maps](#)
[MetroABQ Homes-For-Sale Map](#)
[Little Free Libraries Map](#)
[Buyer Tools/Seller Tools](#)
[Weekly Blog Posts](#)
[Newsletter Archive](#)



I am a dedicated seven-days-a-week real estate professional, representing clients for 15+ years throughout the MetroABQ—I love this city!

I continually seek out the hidden gems in all areas for my **Buyers**, & am a tireless promoter for all of my **Sellers'** listings. I love talking real estate...

Chris Lucas
Broker/Property Manager
505.463.5317

Chris@chrislucasabq.com
ChrisLucasABQ.com
My 3-D Virtual Tours



Unless otherwise indicated,
all photos are by [Rob Thalmann Photography](#) or Chris Lucas.

Copyright © 2018-23 SubrekABQ, LLC. All rights reserved.

Mailing address:

Chris Lucas Real Estate


PO Box 40081

Albuquerque, NM 87196

To reach Chris, call or text: 505.463.5317

Want to change how you receive these emails?

You can [update your preferences](#) or [unsubscribe from this list](#).

 Facebook

 Website

 Email