

MetroABQ Real Estate Newsletter

Including Rio Rancho, Corrales, Placitas, Atrisco Valley, Los Lunas & the East Mountains.

September

Artscrawl: Outdoor Art Across the Metro

Vintage La Luz Listing



Wherever you travel in the city, great public art is never far away. With a free afternoon, it's easy to create an interesting sculpture tour, with the MetroABQ as your [outdoor gallery](#).

"Phoenix Rising," above, seemed to appear suddenly & recently along Menaul Blvd & now I always look for it when passing by. Installed in 2020 when many of us might

have missed it, the steel sculpture sits facing the boulevard, on the edge of city Firehouse #9 property...Artists [Don Kennell & Lisa Adler](#) created the big bird as part of the City of Albuquerque Public Art program. [Another angle...](#)

Then happening by 2nd St on Central Ave, you pass "Lobo Loco", two images below, which stands along Route 66 staring southward. Obviously it's the work of the same artist duo above, DKLA Design. Their website is cool & it looks like they have fun. [Great Lobo Loco scenes are on their site.](#)







The varied art installations can be subtle. Hiking along the paths between Juan Tabo & Tramway Blvds in the Bear Cañon Open Space Arroyo, you see the Bear Canyon Bears playing on the rocks from far away, above. The *Osos del Cañon*, above, by sculpture Reynaldo Rivera, have been spending time there for over 25 years. The three bears can also be seen driving past the arroyo along Tramway Blvd.

The Bear Cañon Arroyo was carved out between the Foothills communities of High Desert & Glenwood Hills & shunts millions of gallons of runoff rainwater from the Sandia Mountains. The John B Robert Dam & Spillway, which sits at the mouth of the arroyo at Juan Tabo Blvd, is the first flood control barrier to slow the surging waters. The dam & spillway, below, seem to function additionally as large-scale unintentional architectural-art objects.





Bear Canyon Open Space consists of 170 acres that stretch west from the Sandia Foothills & ends deep into the NE Heights at Juan Tabo Blvd. Walking trails crisscross the arroyo & the loop trail is 2.5 miles long. The John B Robert Dam & Spillway are seen in blue on the west end. I consider it the Central Park of the MetroABQ.

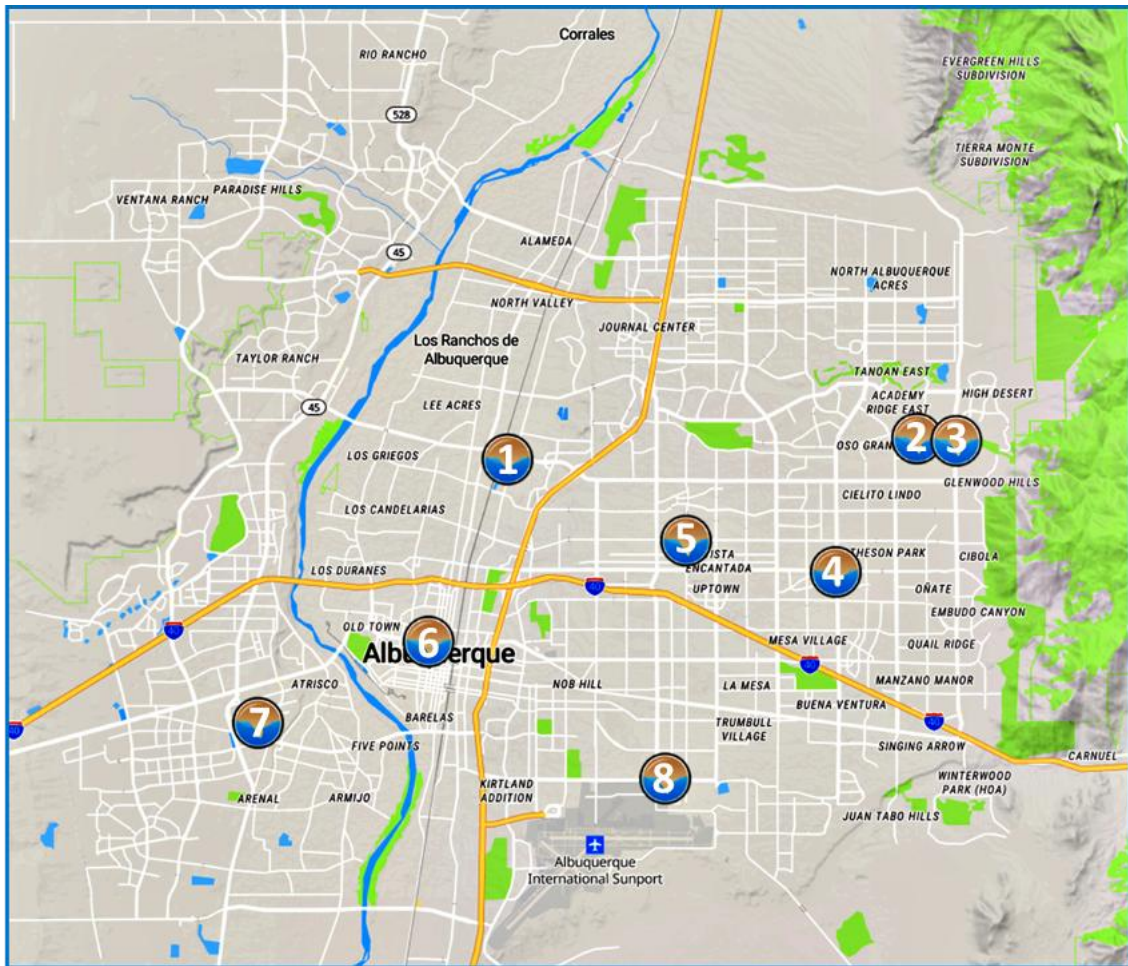


Sometimes quirky art is what is needed. Meeting clients for the first time in Quigley Park in the NE Height's Mossman neighborhood, the quirky abstract artwork nearby added nicely to the conversations. Summer Figure No 24 stands fifteen feet tall & has a lot to offer. [A silhouette image.](#)

Another park with quirky artwork in the middle is Alamosa Park in the South Valley. Just north east from the corner of Bridge & Coors Blvds in the park, the sculpture, "Stair Chair", below, by artist David Wagner, was installed in 2013. It seems to be an

amalgamation of different concepts to me, presented abstractly. That is why art appeals to so many different people, who see different things in the work. The chair does act as a chair, or southwestern banco, on both sides.

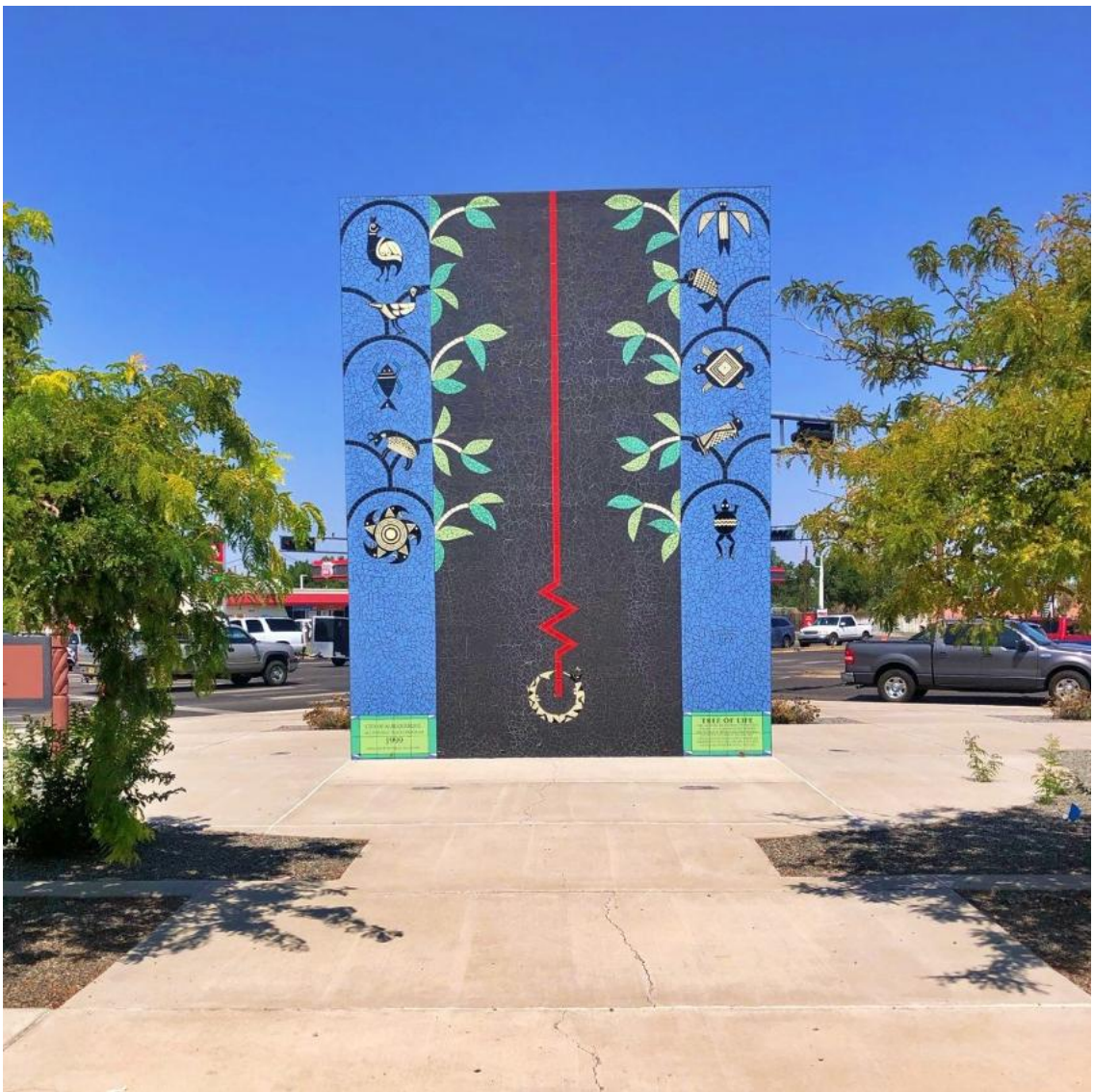




Art Installation Guide: 1. "Tree of Life"; 2. John B Robert Dam & Spillway; 3. "Osos del Cañon"; 4. "Phoenix Rising"; 5. "Summer Figure No 24"; 6. "Loco Lobo"; 7. "Star Chair"; & 8. "Cruising San Mateo (I, II & III)"



"Cruising San Mateo (I, II & III)", above & below, may also be known to many as the "Chevy-On-A-Stick", which was the moniker given the [tiled public art piece unveiled 30 years ago](#) on the south east corner of the Parkland Hills neighborhood at San Mateo & Gibson Blvds. It's another outdoor art piece that holds a defining place in the city.



Tens of thousands of folks pass by one of my favorite exhibits of the bunch each week, & most probably barely notice it. The intricately designed tile mosaic project lives in the North Valley, above & below, on the corner of Fourth St & Montaña Blvd. Parking is easy behind the installation just east on Montaña. I mention that because it's a good exhibit to go see. The back of the piece (or is it the front?), above, faces inward toward the park, unseen by passersby in cars.

Called "Tree of Life", the large wall of organically shaped & polychromatic broken tile pieces forms images & shapes; it is the focal point of the small pocket park. Even at one of the busiest intersections in the North Valley, a few quiet minutes absorbing the details of the work can reset things nicely.

Written at the site: "This artwork recognizes the imagery of early cultures that influenced the peoples of Mexico & New Mexico. The black & white figures are animal images from Native American Mimbres Pottery. The colorful figures are images from the Maya culture."

The [Mimbres](#) animal images at the "Tree of Life" remind me of the continuing [Columbia St Art-Walk Project](#) created by local teacher & artist Courtney Angermeier.



Unless otherwise indicated,
all photos are by [Rob Thalmann Photography](#) or Chris Lucas.

www.ChrisLucasABQ.com

[My Listings](#)

[3-D Walking Tours](#)

[\(Virtual\) Open Houses](#)

[Property Searches](#)

[Historic Neighborhoods Maps](#)

[MetroABQ Homes-For-Sale Map](#)

[Little Free Libraries Map](#)

[Buyer Tools/Seller Tools](#)

[Twice-Weekly Blog Posts](#)

[Newsletter Archive](#)

also see...

www.NobHillNeighborhoods.com



I am a dedicated seven-days-a-week real estate professional, in **the top 5% of MetroABQ Realtors**—I love this city!

I continually seek out the hidden gems in all areas for my **Buyers**, & I am a tireless promoter for all of my **Sellers'** listings.
I love talking about real estate...

Chris Lucas

Owner/Broker

505.463.5317

Chris@chrislucasabq.com

ChrisLucasABQ.com

NobHillNeighborhoods.com

My 3-D Virtual Tours



Copyright © 2018-21 SubrekABQ, LLC. All rights reserved.

My mailing address is:

PO Box 40081

Albuquerque, NM 87196

To reach Chris: 505.463.5317

Want to change how you receive these emails?

You can [update your preferences](#) or [unsubscribe from this list](#).



Facebook



Website



Email