

- House
- Pipeline
- Boundary
- Stream, Intermittent
- River/Creek
- Water Body

|  Boundary 74.8 ac

SOIL CODE	SOIL DESCRIPTION	ACRES	%	CAP
PnB	Pelion loamy sand, 2 to 6 percent slopes	4.7	6.26	2e
Pa	Pamlico muck, frequently flooded	8.3	11.11	7w
AeC	Ailey loamy sand, 6 to 10 percent slopes	6.8	9.06	6s
AaB	Ailey sand, moderately wet, 0 to 6 percent slopes	55.0	73.57	3s
TOTALS		74.8	100%	3.65

### Capability Legend

Increased Limitations and Hazards

Decreased Adaptability and Freedom of Choice Users

Land, Capability  
Class(non-irrigated)

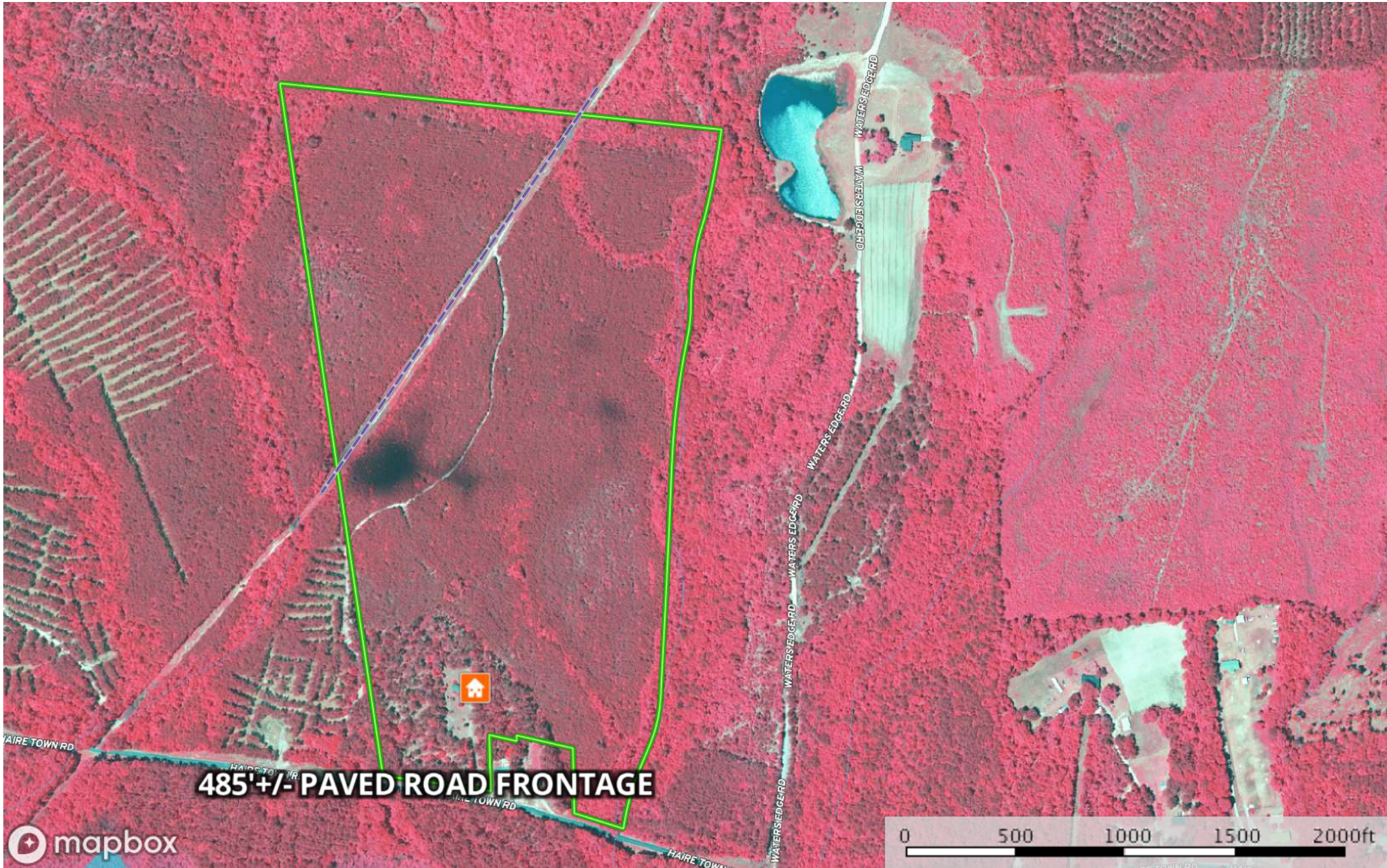


	1	2	3	4	5	6	7	8
'Wild Life'	•	•	•	•	•	•	•	•
Forestry	•	•	•	•	•	•	•	
Limited	•	•	•	•	•	•	•	
Moderate	•	•	•	•	•	•		
Intense	•	•	•	•	•			
Limited	•	•	•	•				
Moderate	•	•	•					
Intense	•	•						
Very Intense	•							

### Grazing Cultivation

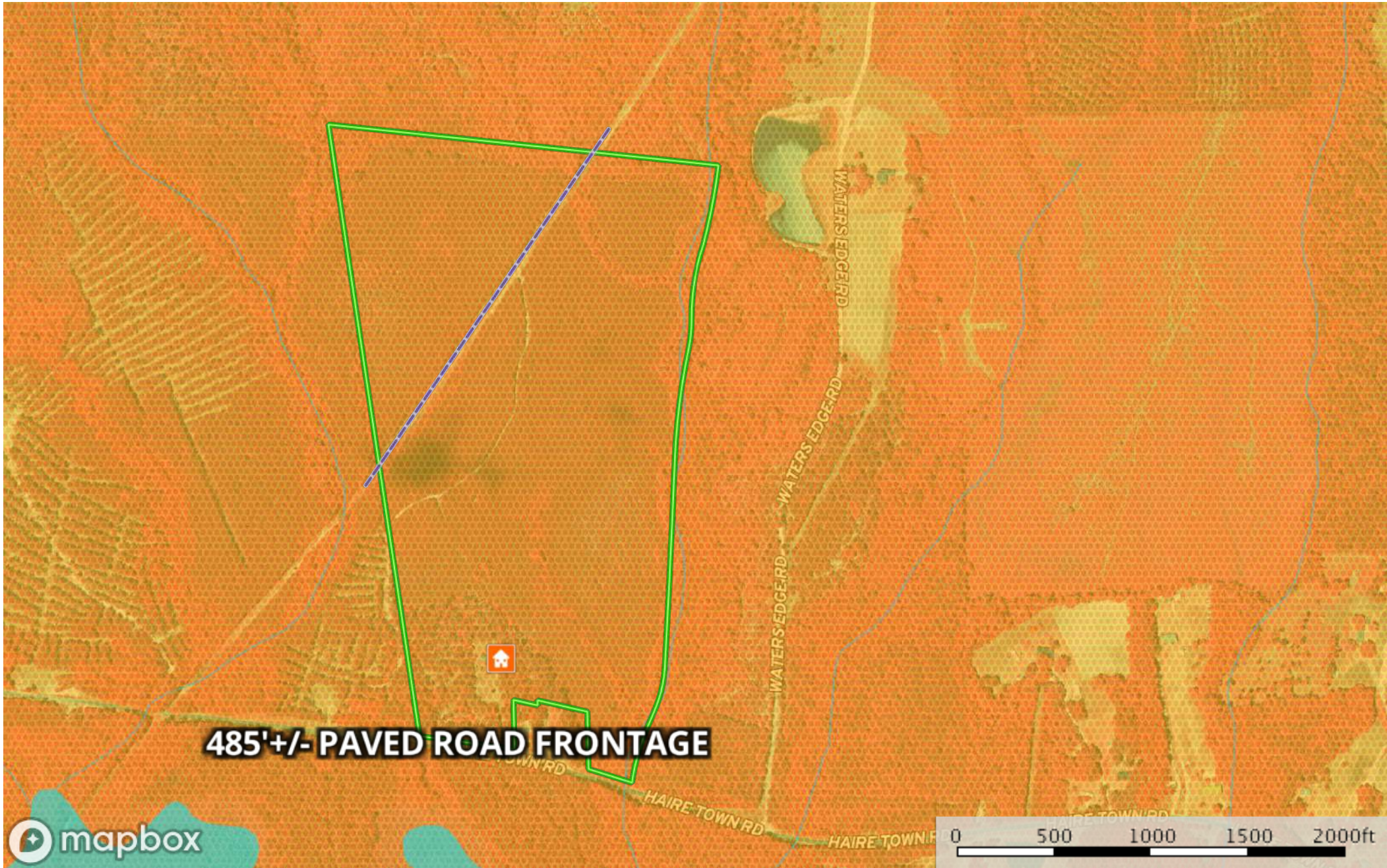
(c) climatic limitations (e) susceptibility to erosion

(s) soil limitations within the rooting zone (w) excess of water



**485'+/- PAVED ROAD FRONTAGE**

- House
- Pipeline
- Boundary
- Stream, Intermittent
- River/Creek
- Water Body



**485'+/- PAVED ROAD FRONTAGE**



- House
- Pipeline
- Boundary
- Opportunity Zones
- Stream, Intermittent
- River/Creek
- Water Body

# Haire Town Road Parcels, Wallace, Marlboro County, SC

Marlboro County, South Carolina, AC +/-



- House
- Pipeline
- Boundary
- Stream, Intermittent
- River/Creek
- Water Body