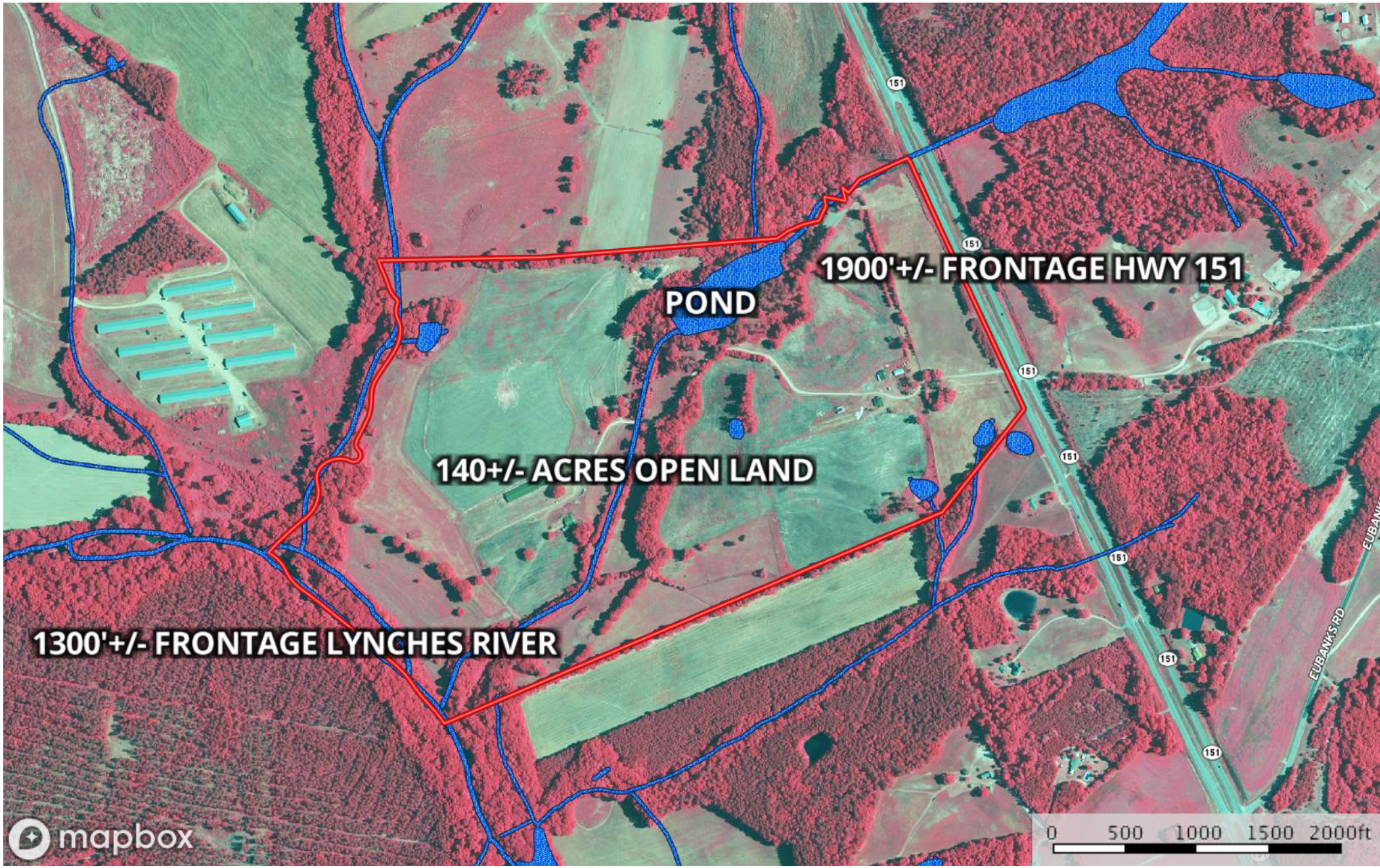
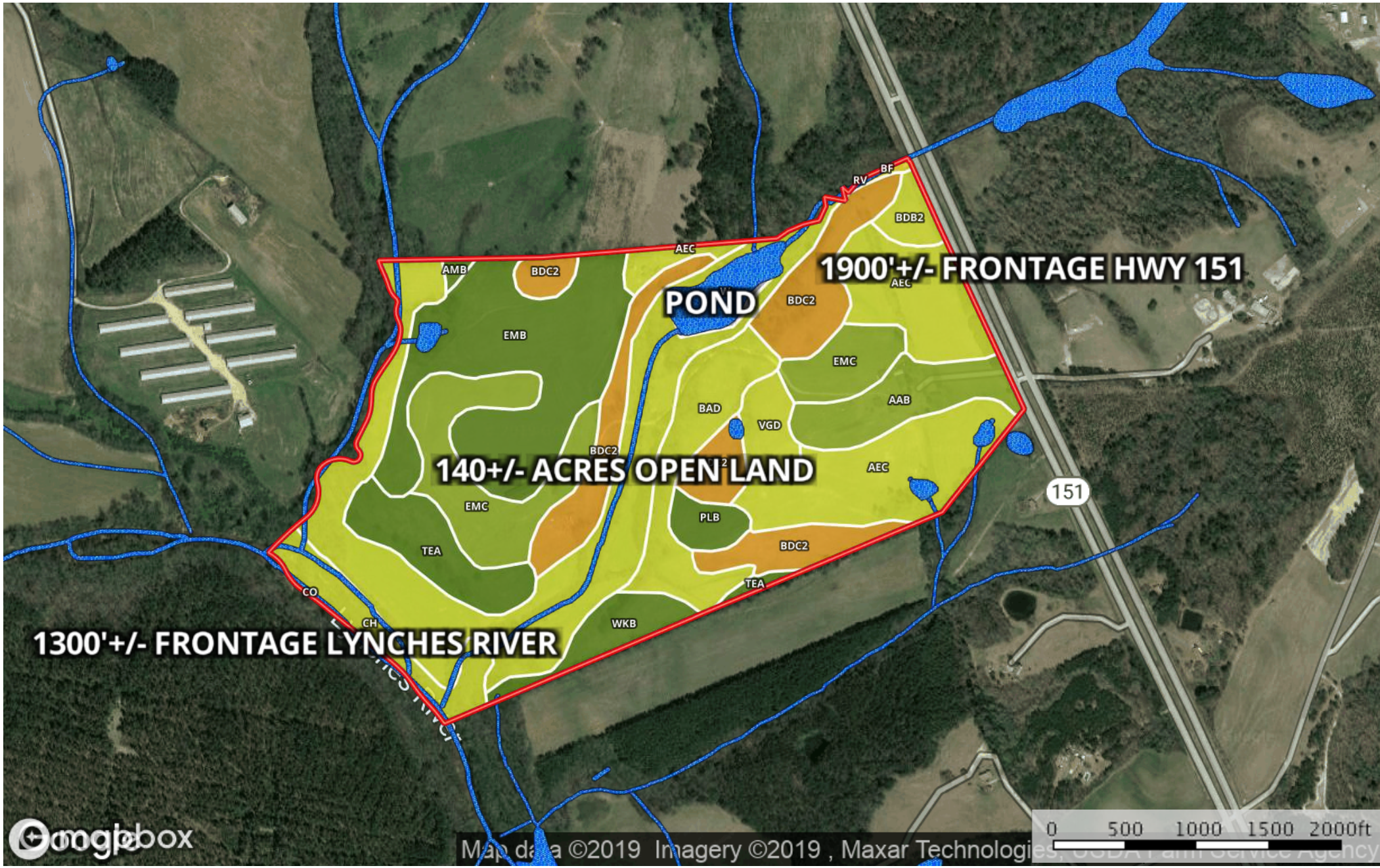


- Boundary
- Wetlands
- Riparian



- Boundary
- Wetlands
- Riparian



- Boundary
- Wetlands
- Riparian









|  Boundary 183.6 ac

SOIL CODE	SOIL DESCRIPTION	ACRES	%	CAP
Bf	Bibb sandy loam, frequently flooded	0.3	0.18	5w
AaB	Ailey sand, moderately wet, 2 to 6 percent slopes	8.3	4.53	3s
VgD	Vaucluse gravelly loamy sand, 10 to 15 percent slopes	3.7	2.0	4e
Rv	Riverview silt loam, frequently flooded	35.3	19.24	4w
BdB2	Badin silty clay loam, 2 to 6 percent slopes, eroded	2.3	1.25	4e
AeC	Ailey sand, 6 to 10 percent slopes	27.2	14.81	4s
EmC	Emporia loamy sand, 6 to 10 percent slopes	17.8	9.69	3e
BdC2	Badin silty clay loam, 6 to 10 percent slopes, eroded	23.9	13.04	6e
PIB	Pelion loamy sand, 2 to 6 percent slopes	2.7	1.45	2e
W	Water	3.7	2.02	-
TeA	Tetotum sandy loam, 0 to 2 percent slopes	8.7	4.74	2w
BaD	Badin silt loam, 10 to 15 percent slopes	10.9	5.95	4e
WkB	Wickham sandy loam, 2 to 6 percent slopes	4.9	2.65	2e
EmB	Emporia loamy sand, 2 to 6 percent slopes	26.5	14.45	2e
AmB	Alamance sandy loam, 1 to 6 percent slopes	0.5	0.25	2e
Ch	Chewacla clay loam, 0 to 2 percent slopes, frequently flooded	6.7	3.66	4w
Co	Congaree loam	0.2	0.08	3w
TOTALS		183.6	100%	3.57

## Capability Legend

Increased Limitations and Hazards

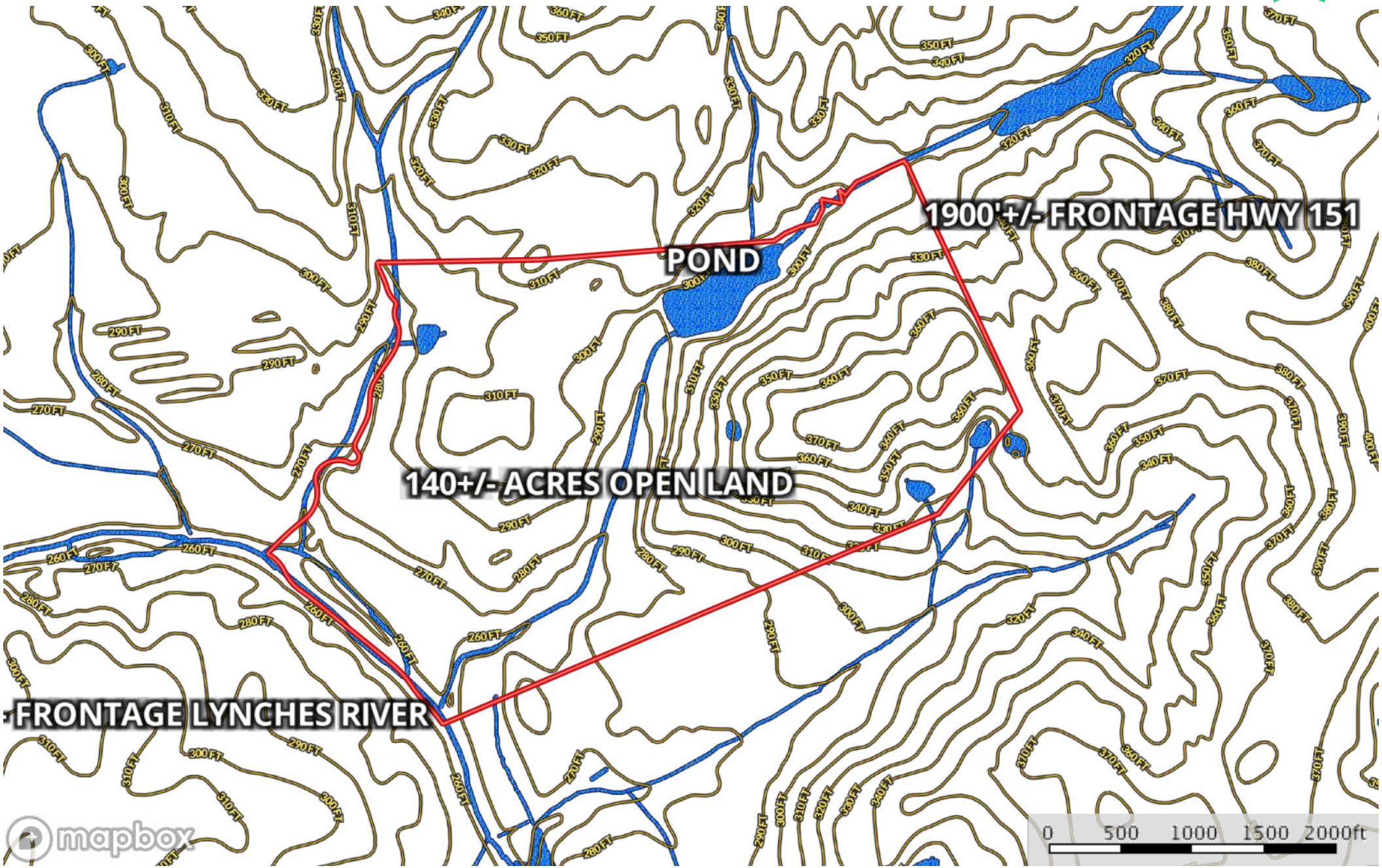
Decreased Adaptability and Freedom of Choice Users

Land, Capability Class(non-irrigated)								
	1	2	3	4	5	6	7	8
'Wild Life'	•	•	•	•	•	•	•	•
Forestry	•	•	•	•	•	•	•	
Limited	•	•	•	•	•	•	•	
Moderate	•	•	•	•	•	•		
Intense	•	•	•	•	•			
Limited	•	•	•	•				
Moderate	•	•	•					
Intense	•	•						
Very Intense	•							

### Grazing Cultivation

(c) climatic limitations (e) susceptibility to erosion

(s) soil limitations within the rooting zone (w) excess of water



- Boundary
- Wetlands
- Riparian